



IKIGAI

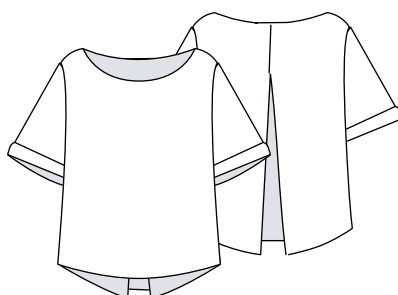
SPRING / SUMMER 2025



#W6

Instructions et patron
(DIN-A4)

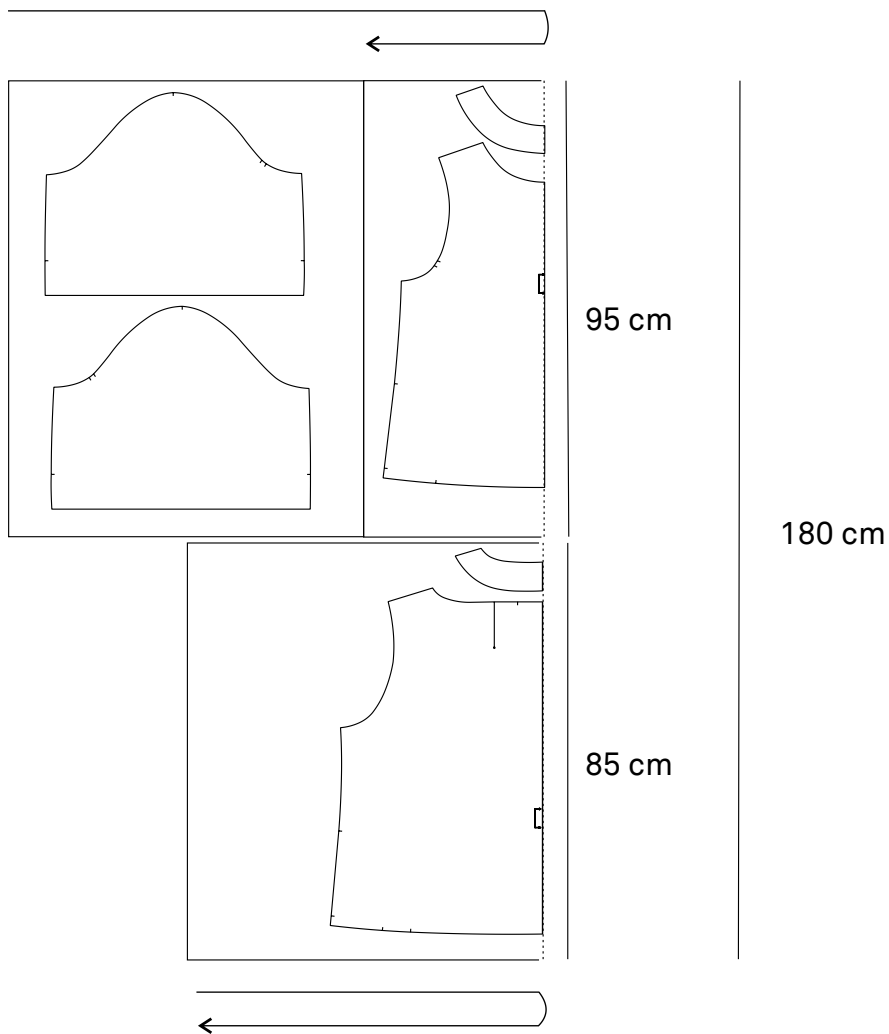
Tunique



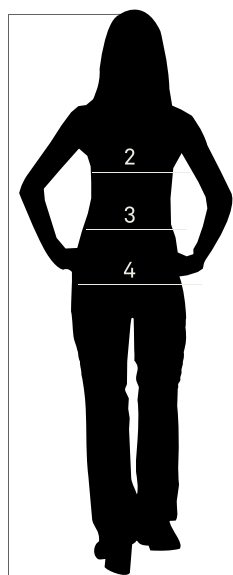
[Téléchargez ici](#)
[Patron en](#)
[taille réelle](#)



Plan de coupe :



Woman




	XXS	XS	S	M	L	XL	XXL
1. Height (cm)	168 ± 4 cm average height						
2. Bust (cm)	82	86	90	94	98	104	110
3. Waist (cm)	62	66	70	74	78	84	90
4. Hips (cm)	90	94	98	102	106	112	118


Fournitures :
25 cm de triplure thermoadhésive fine en 90 cm de large.

Métrage nécessaire
180 cm (toutes les tailles)
Jersey Viscose Print

INSTRUCTIONS

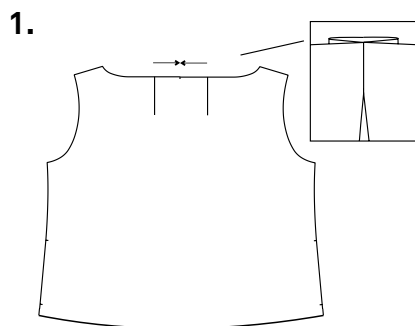


 Envers du tissu

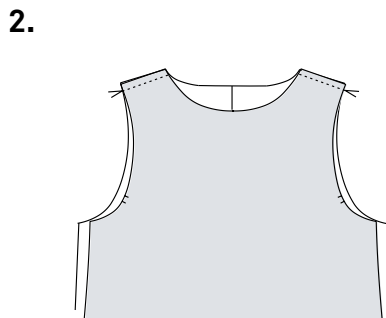
 Endroit du tissu

Préparation :

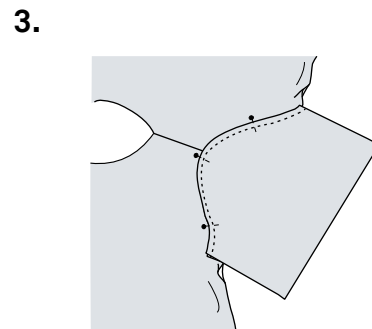
Avant de couper le tissu, il faut le traiter à la vapeur ou le laver. Ainsi, il rétrécit avant la coupe. Répartir le patron sur le tissu en respectant le plan de coupe. Couper en suivant exactement la ligne du patron qui inclut une marge de couture de 1 cm. Les ourlets sont également inclus. Ne pas oublier de cranter pour reporter les repères du patron sur le tissu. Pour obtenir un résultat parfait, après chaque couture, couper les fils, repasser et passer les coutures au point overlock ou zigzag de la machine.



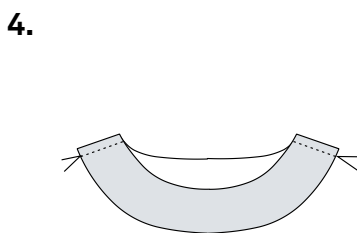
Former et coudre le pli du dos jusqu'au repère reporté du patron.



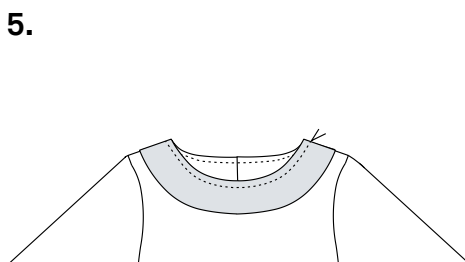
Assembler le devant et le dos et coudre au niveau des épaules.



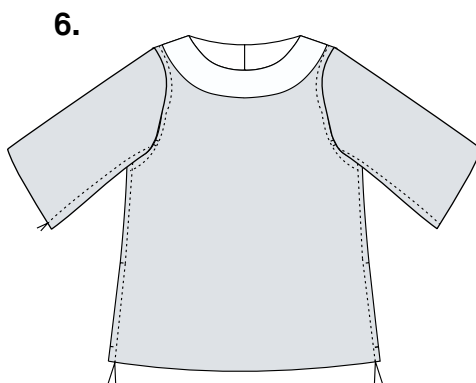
Monter les manches endroit contre endroit en veillant à faire coïncider les repères reportés du patron. Épingler et coudre.



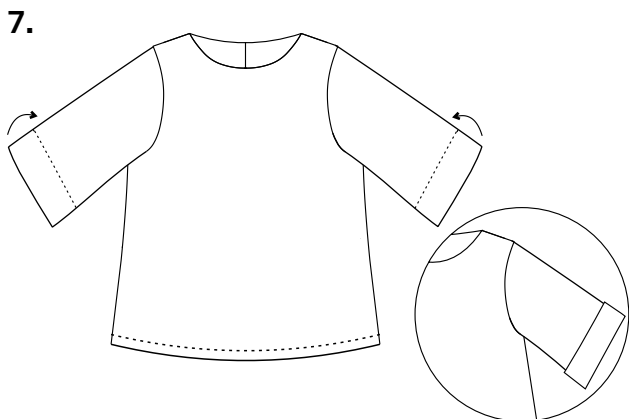
Poser la triplure sur les parementures du col. Puis assembler les parementures placées endroit contre endroit entre elles au niveau des épaules.



Coudre les parementures, endroit contre endroit, sur tout le pourtour du col. Les rabattre sur l'envers et réaliser une surpiqûre de fixation sur le bord de l'encolure.

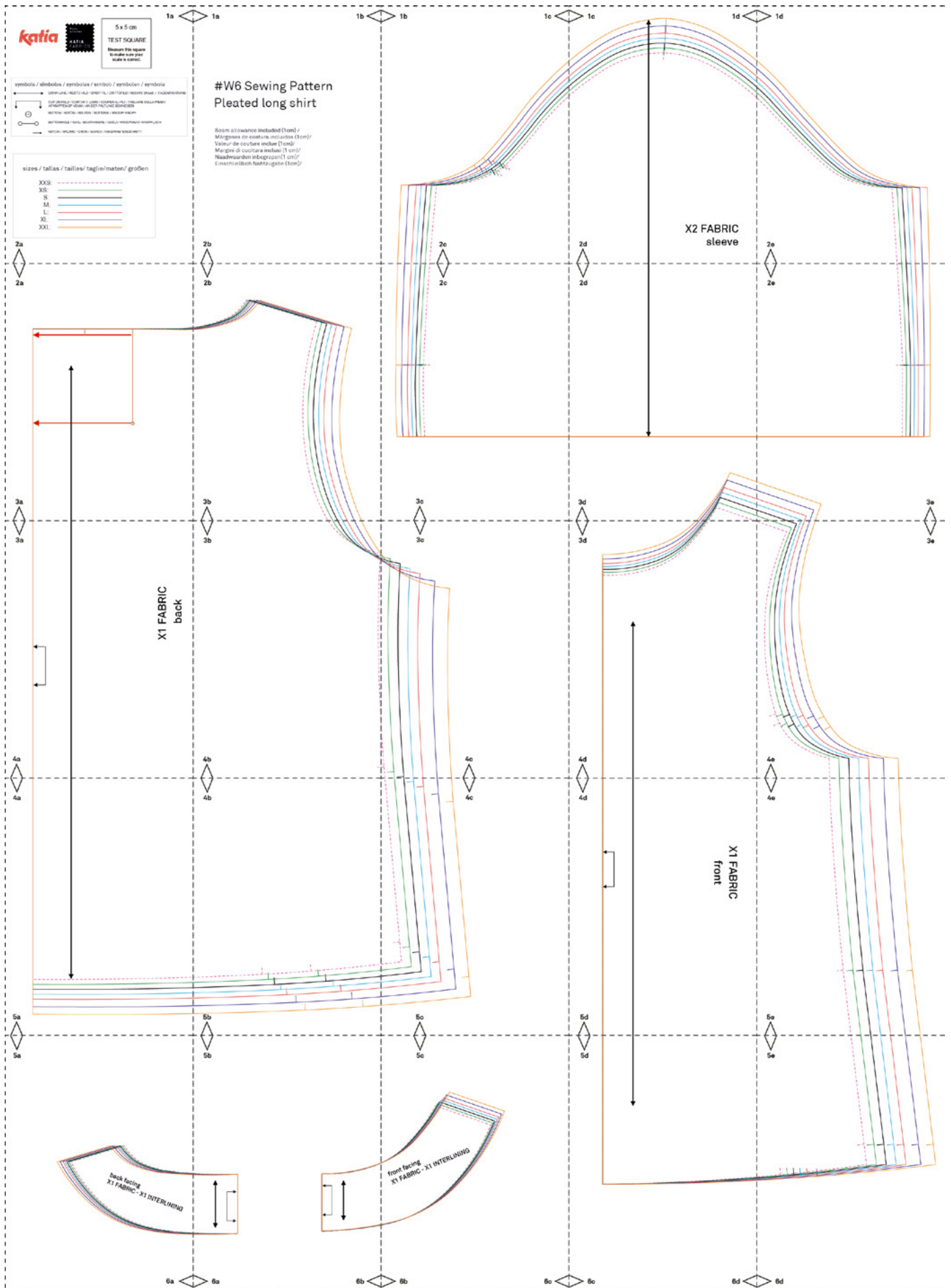


Coudre les côtés du corps et des manches en les plaçant endroit contre endroit.



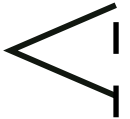
Faire l'ourlet des manches, en respectant les repères. Replier le bord des manches sur l'endroit pour former le revers. Repasser et fixer le revers au niveau de la couture de la manche. Former l'ourlet du bas du vêtement.

Patron :





1a



Katia

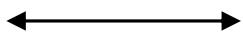


5 x 5 cm

TEST SQUARE

Measure this square to make sure your scale is correct.

symbols / símbolos / symboles / simboli / symbolen / symbole



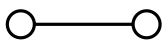
GRAIN LINE / RECTO HILO / DROIT FIL / DRITTOFILO / RECHTE DRAAD / FADENRICHTUNG



CUT ON FOLD / CORTAR A LOMO / COUPER AU PLI / TAGLIARE SULLA PIEGA / AFKNIPPEN OP VOUW / AN DER FALTLINIE SCHNEIDEN



BUTTON / BOTÓN / BOUTON / BOTTONE / KNOOP/ KNOPF



BUTTONHOLE / OJAL/ BOUTINNIERE / ASOLA/ KNOOPSGAT/ KNOPFLOCH



NOTCH / APLOMO / CRAN / MARCA / INKEPING/ EINSCHNITT

sizes / tallas / tailles/ taglie/maten/ Größen

XXS: 

XS: 

S: 

M: 

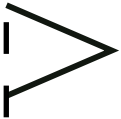
L: 

XL: 

XXL: 

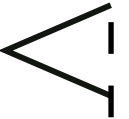
2a





1a

1b



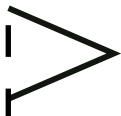
#W6 Sewing Pattern

Pleated long shirt

Seam allowance included (1cm) /
Márgenes de costura incluidos (1cm)/
Valeur de couture incluse (1cm)/
Margini di cucitura inclusi (1 cm)/
Naadwaarden inbegrepen(1 cm)/
Einschließlich Nahtzugabe (1cm)/

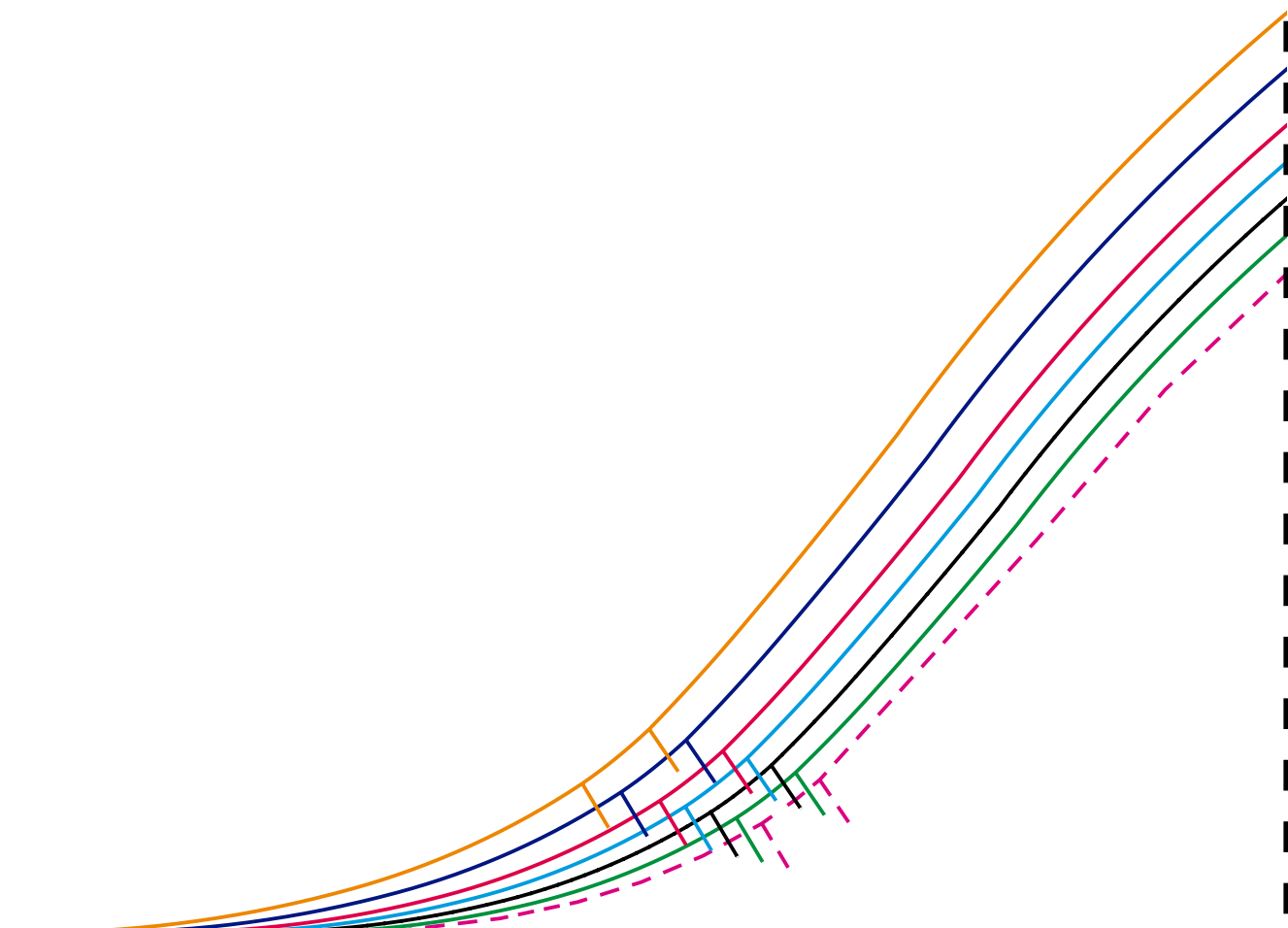
2b





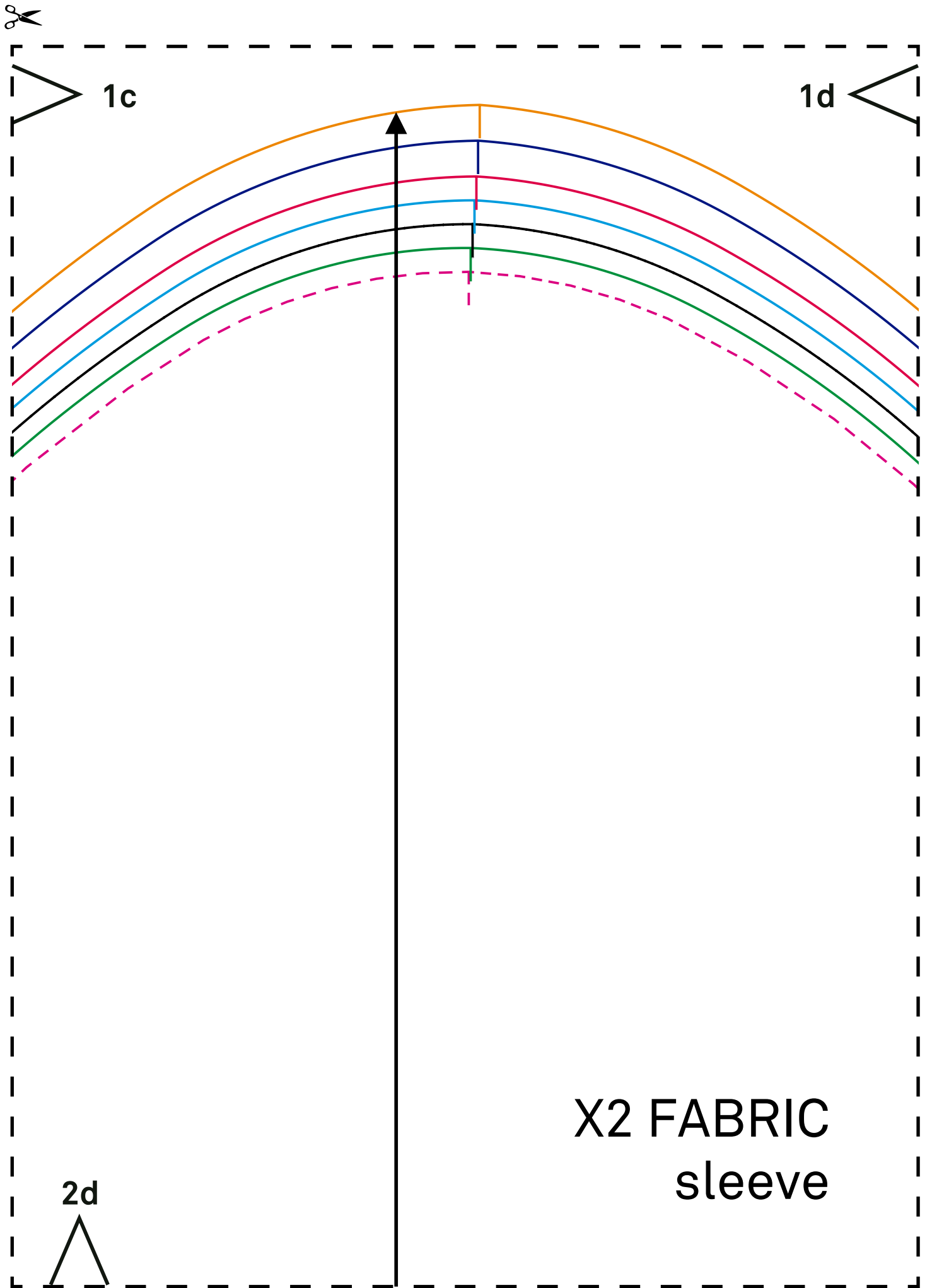
1b

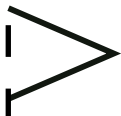
1c



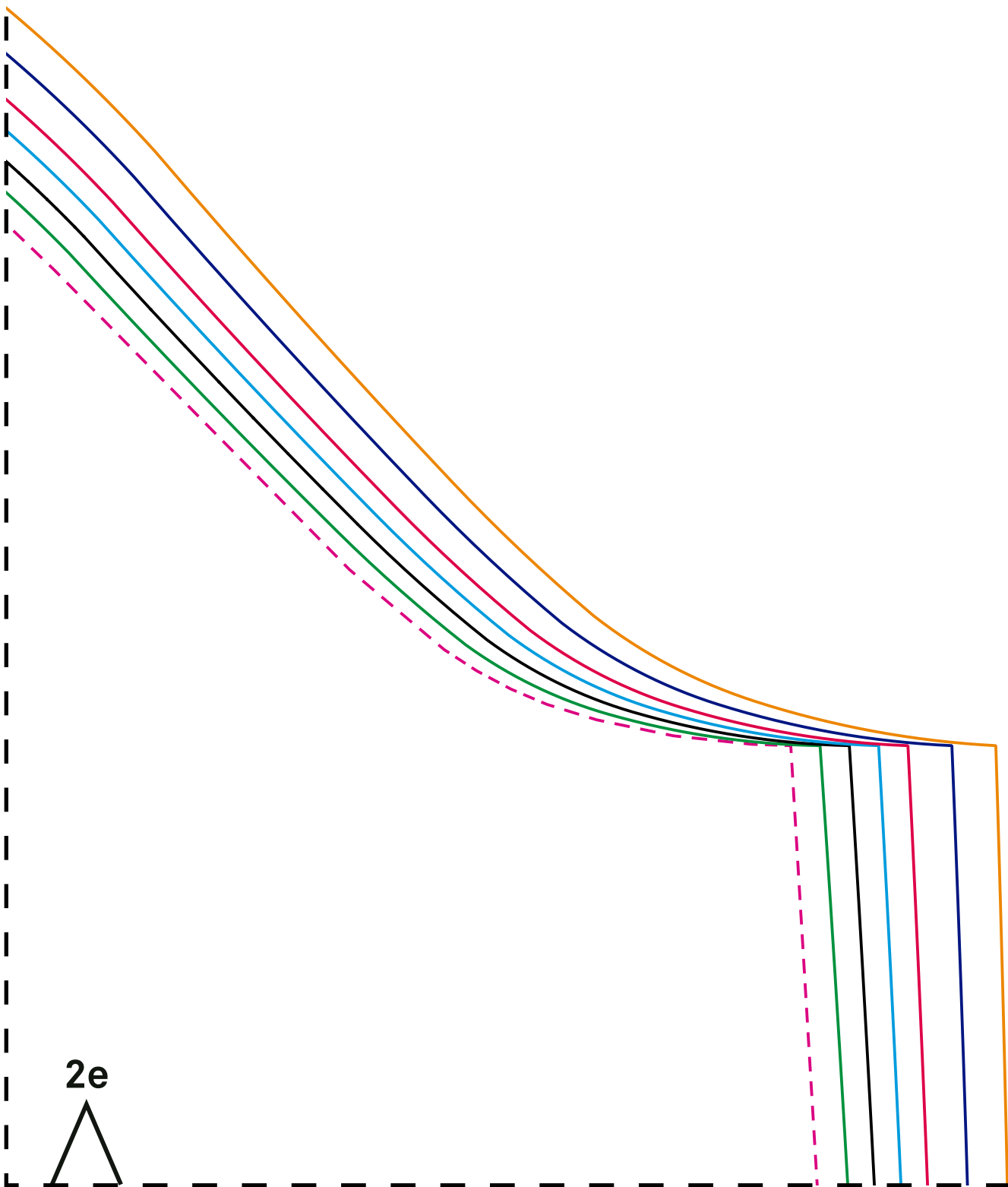
2c







1d

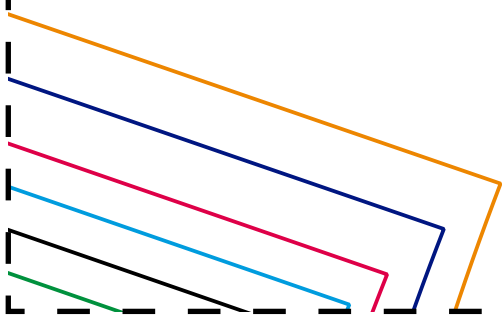
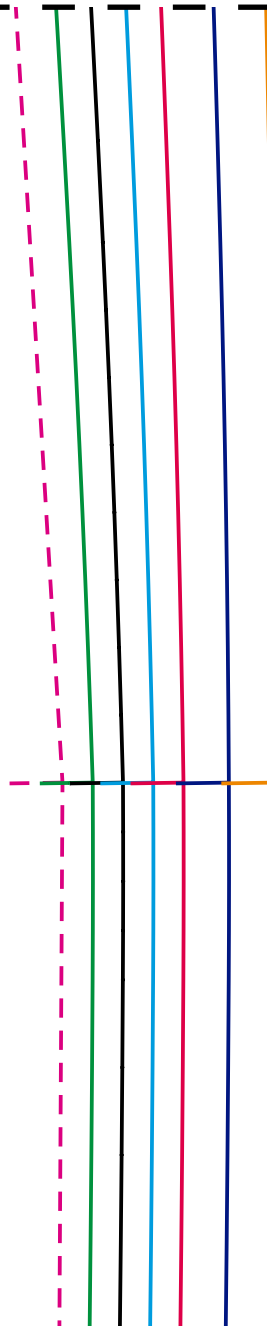


2e

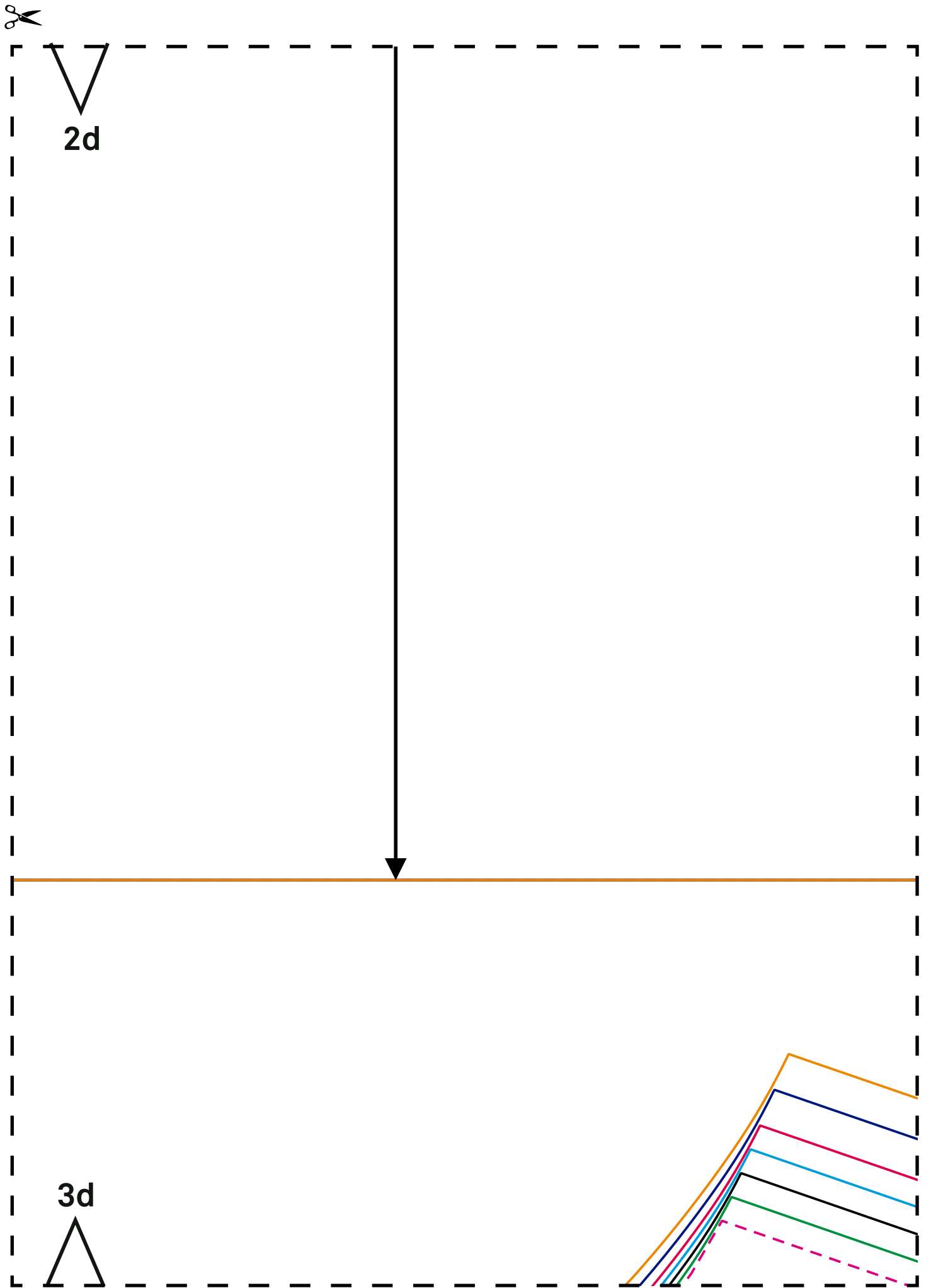


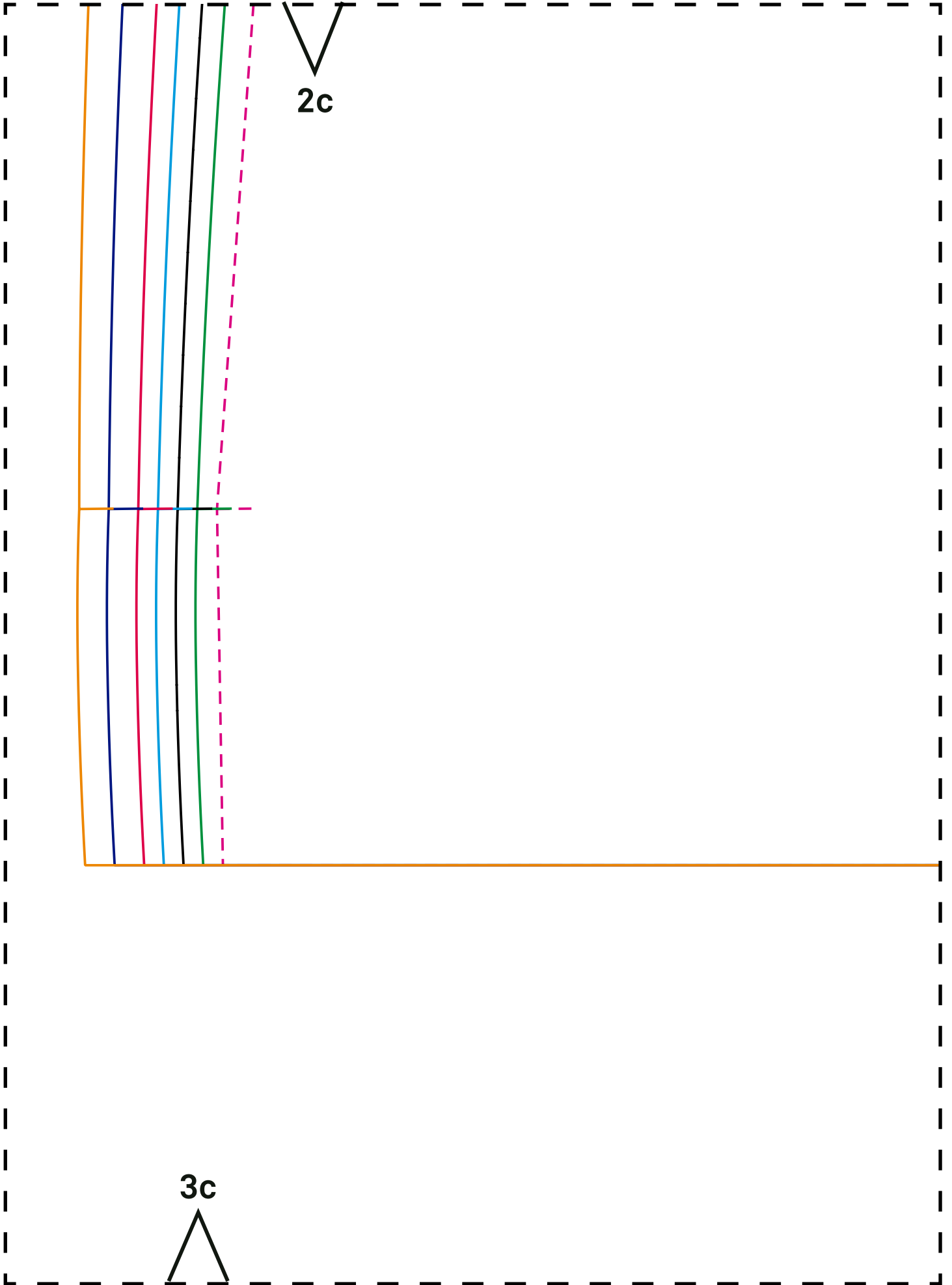


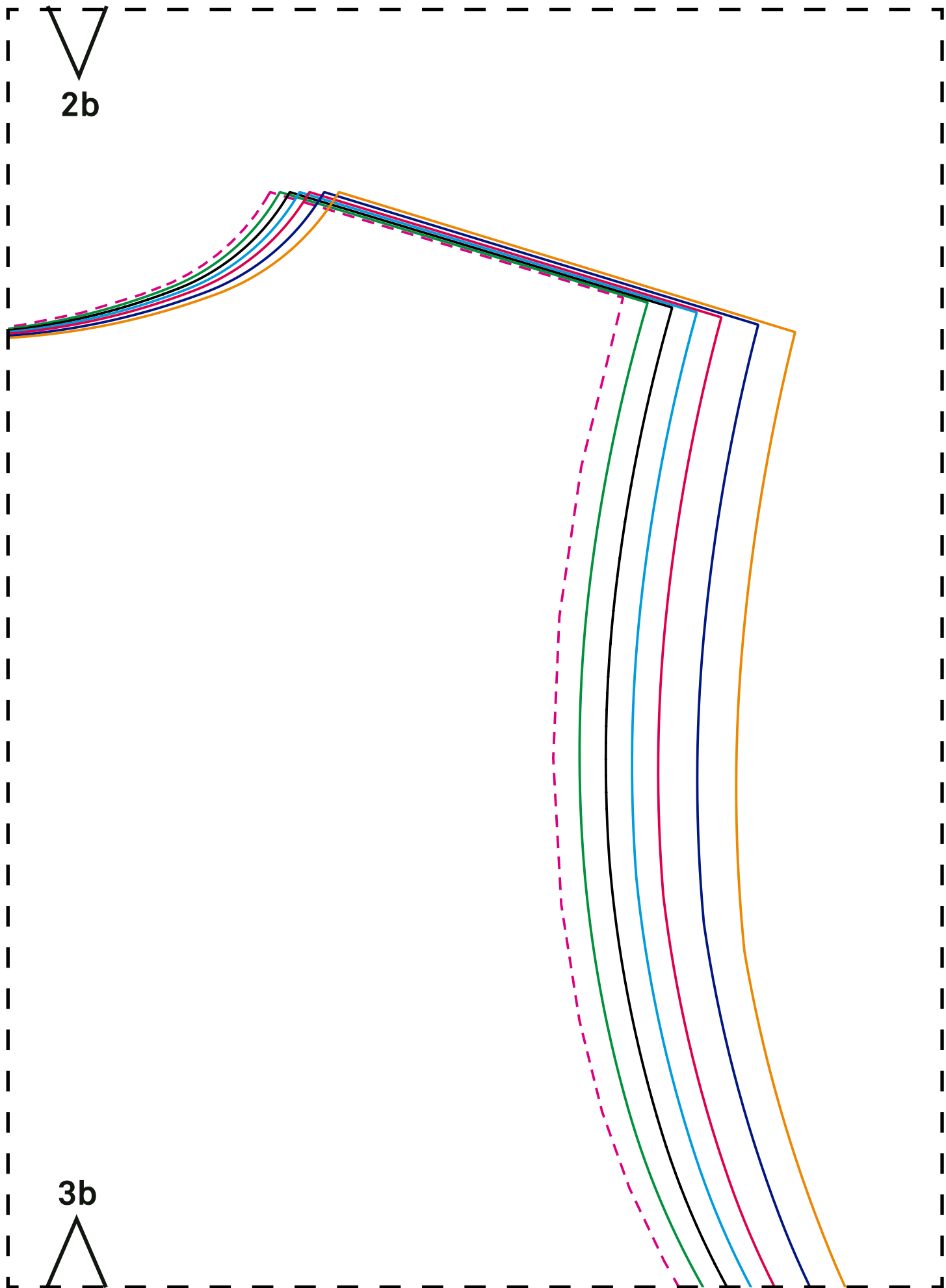
$2e$



$3e$





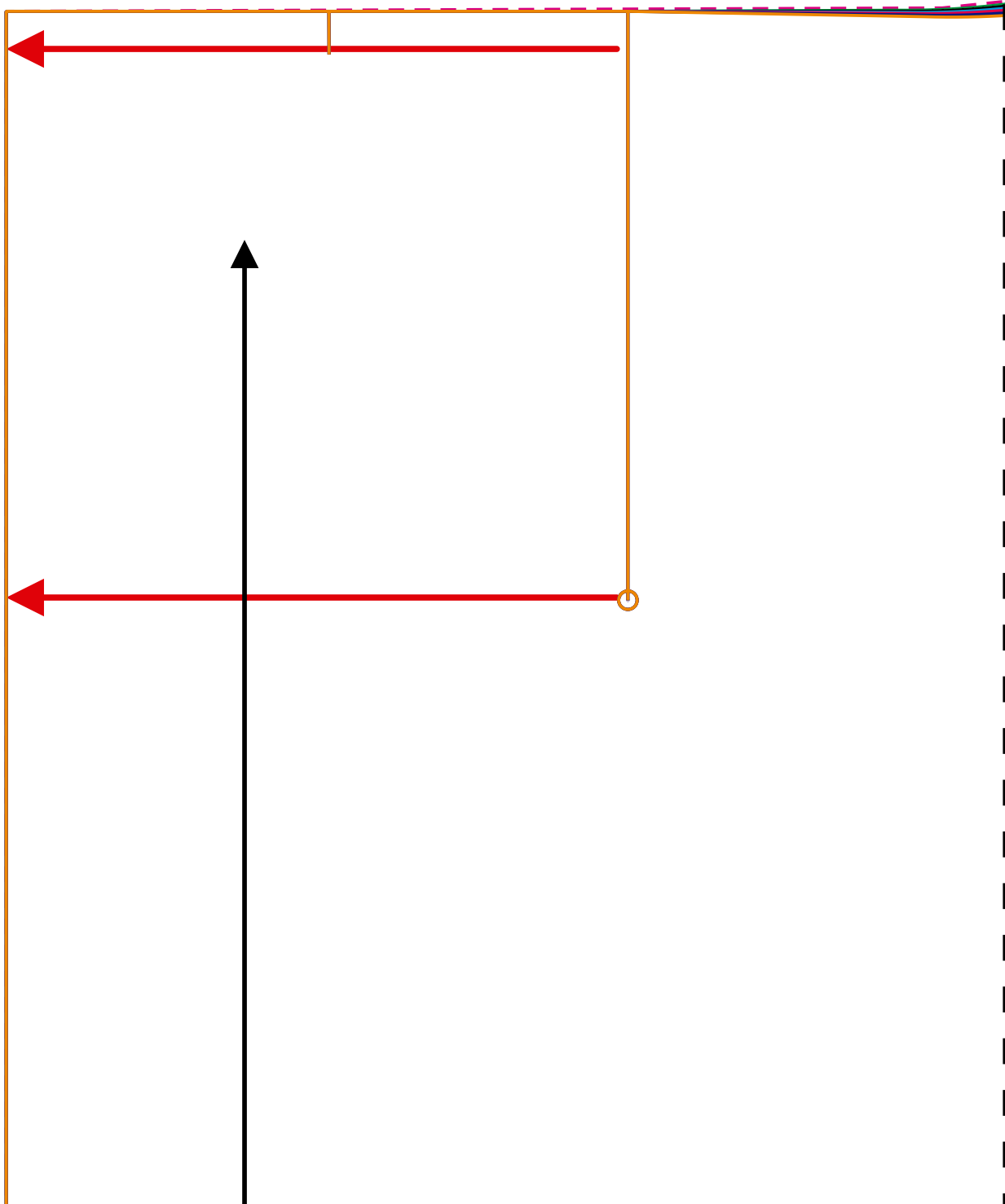


$2b$

$3b$



2a



3a





3a



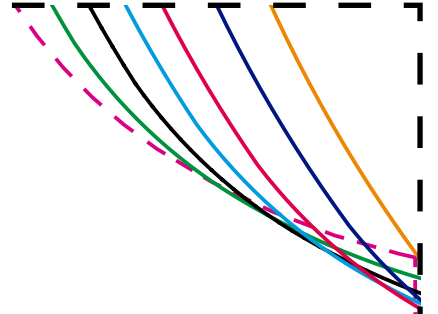
4a



X1 FABRIC
back



3b

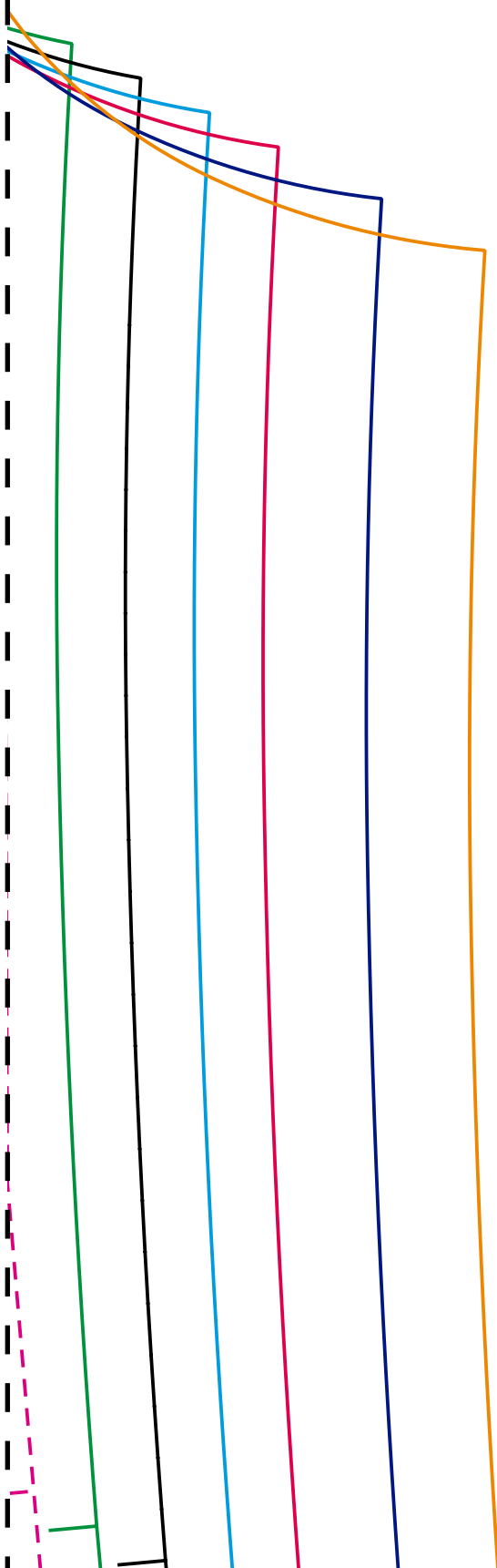


4b





3c



4c

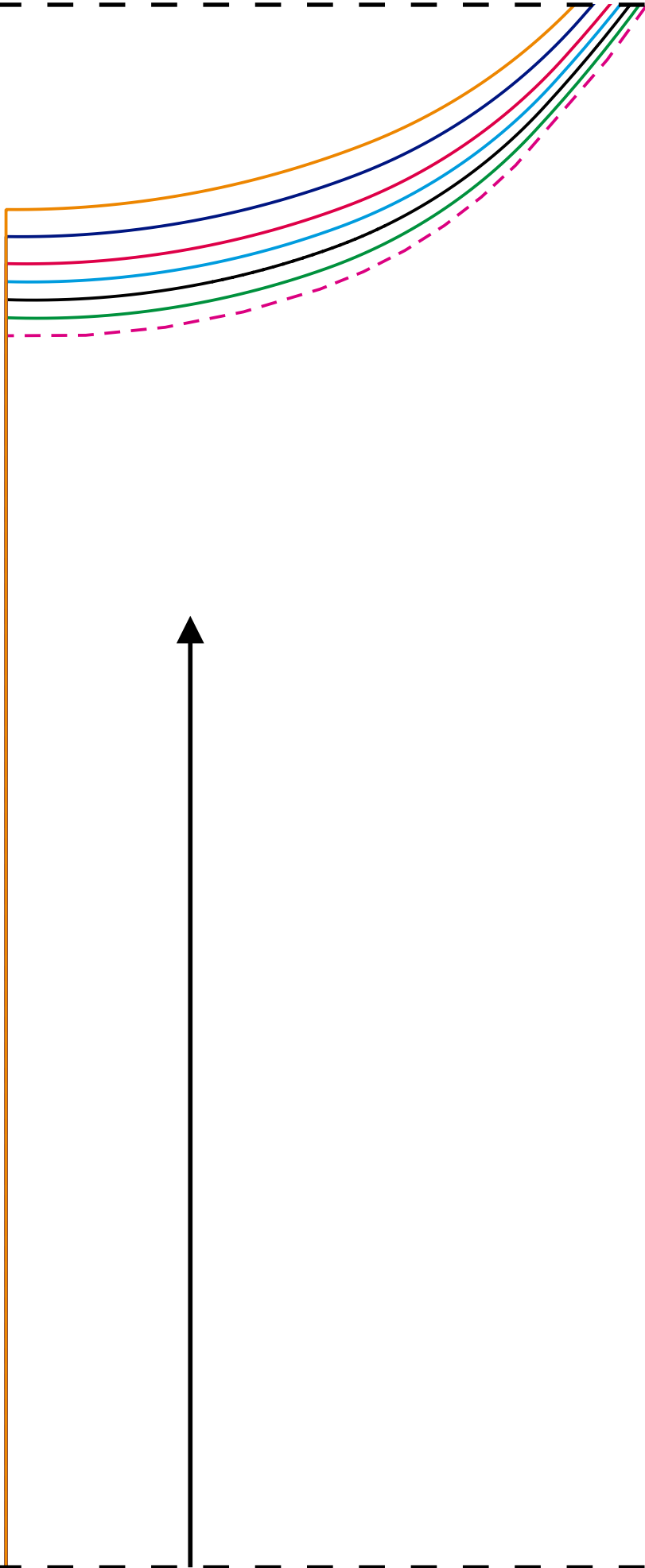




3d



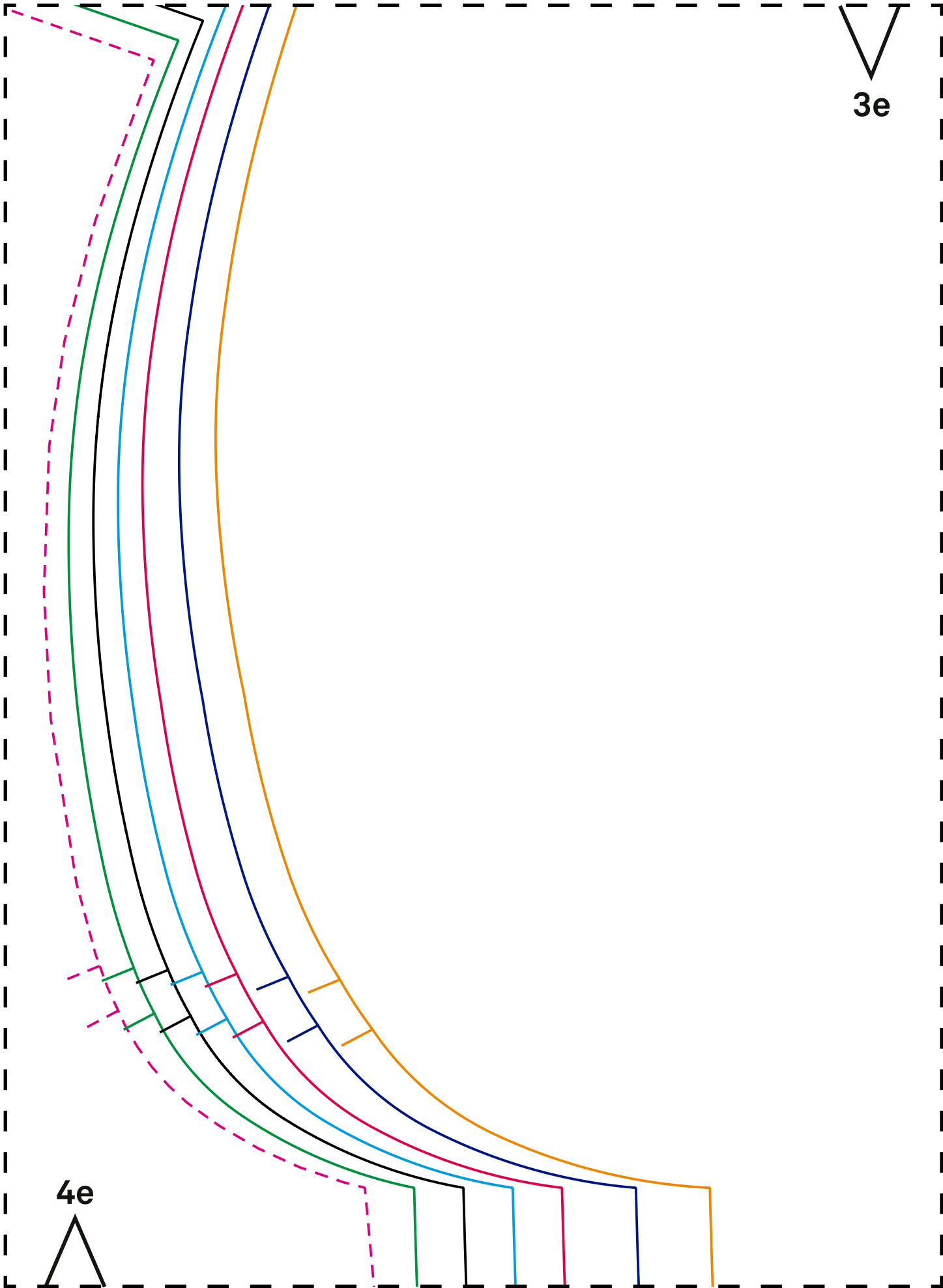
4d





3e

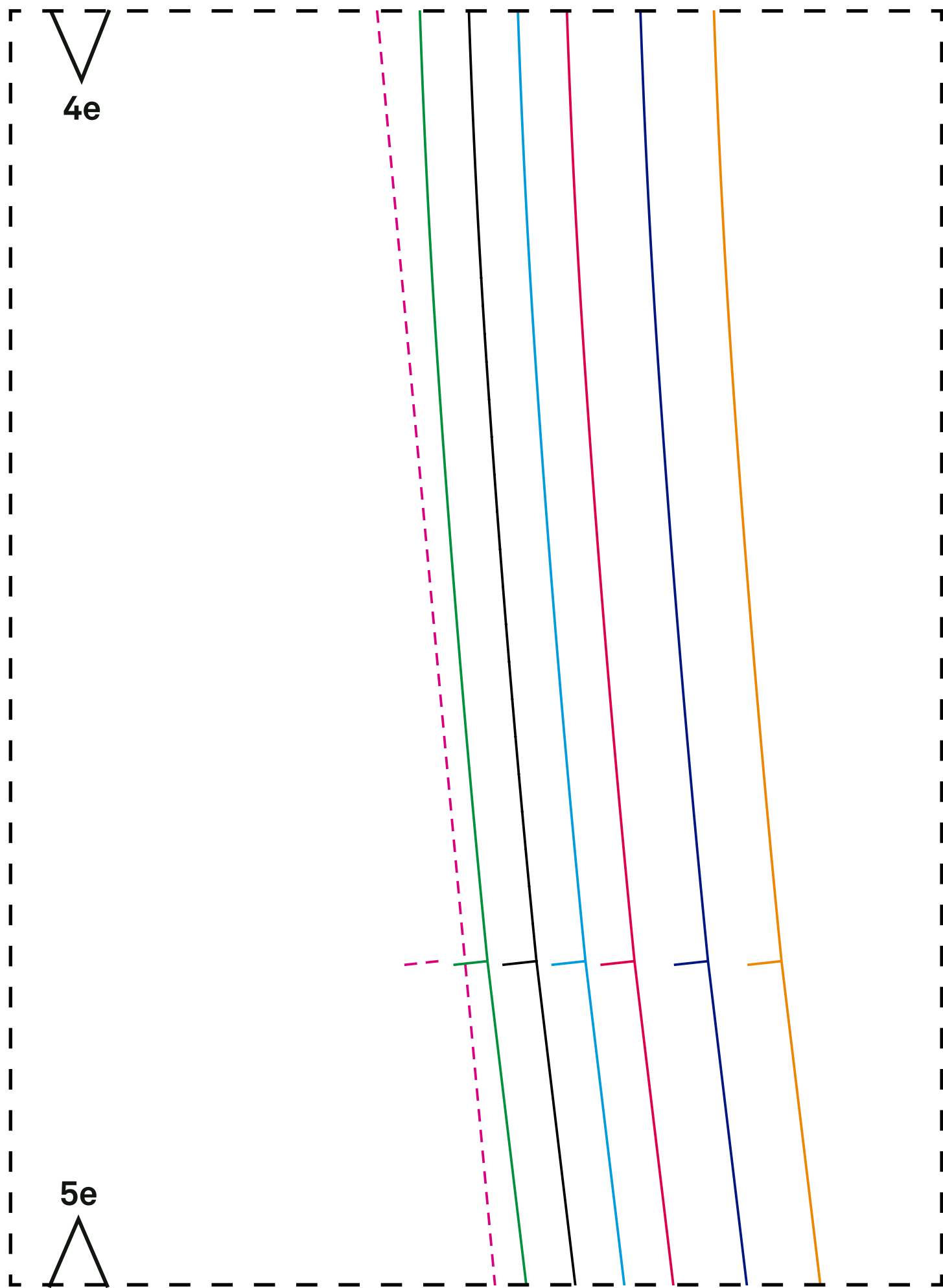
4e





4e

5e



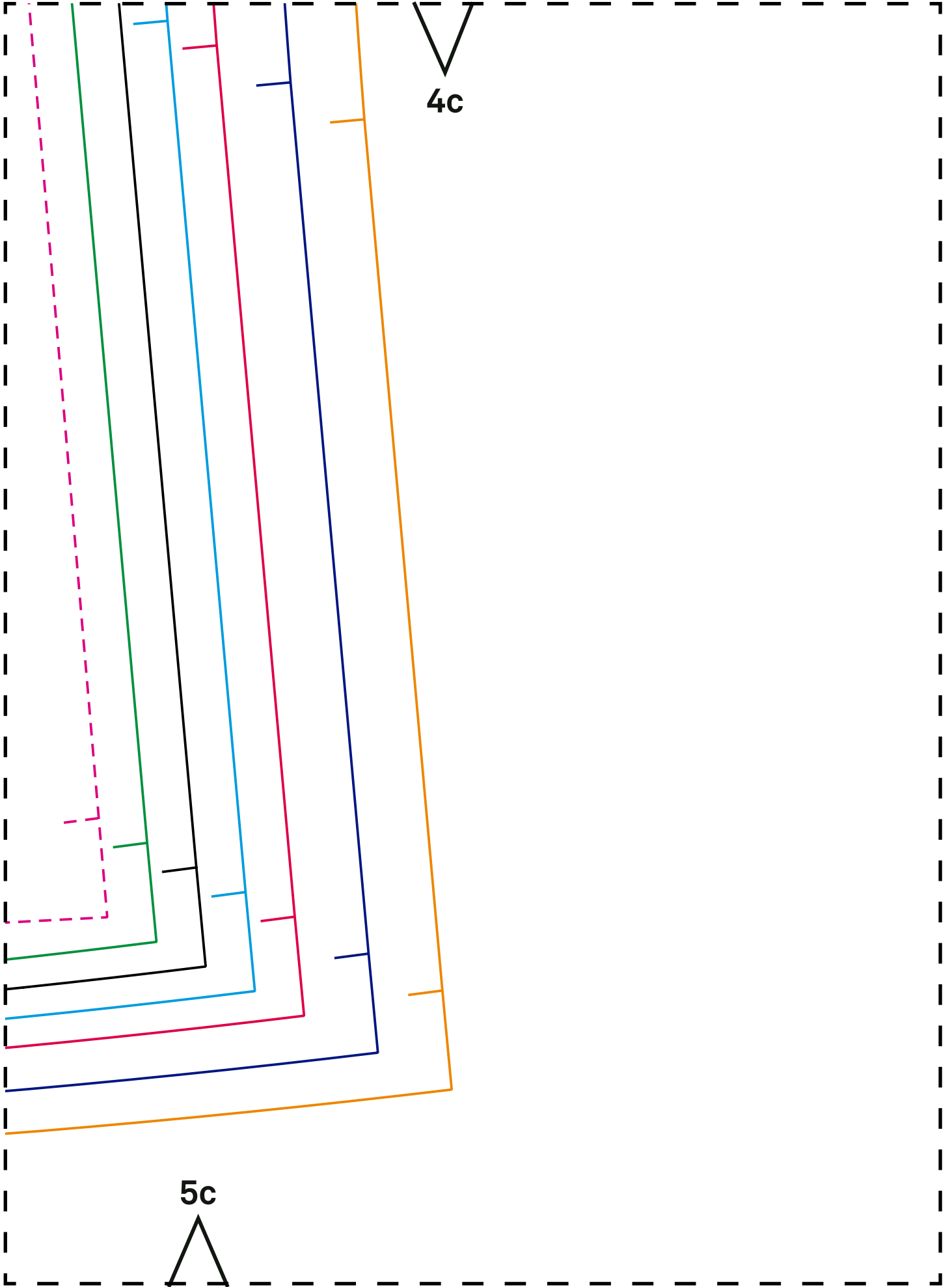


4d



5d

X1 FABRIC
front

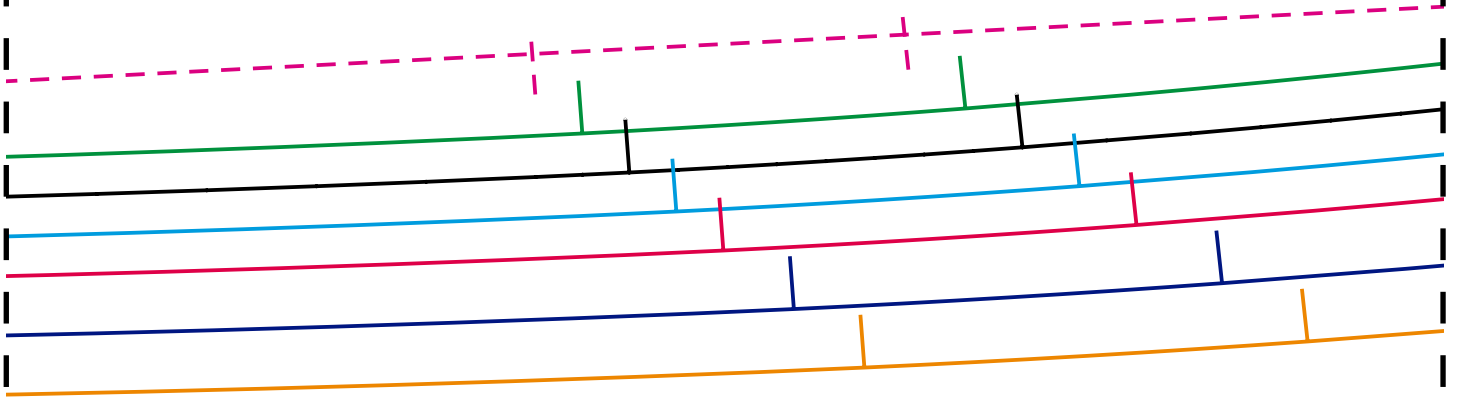


4c

5c



4b



5b

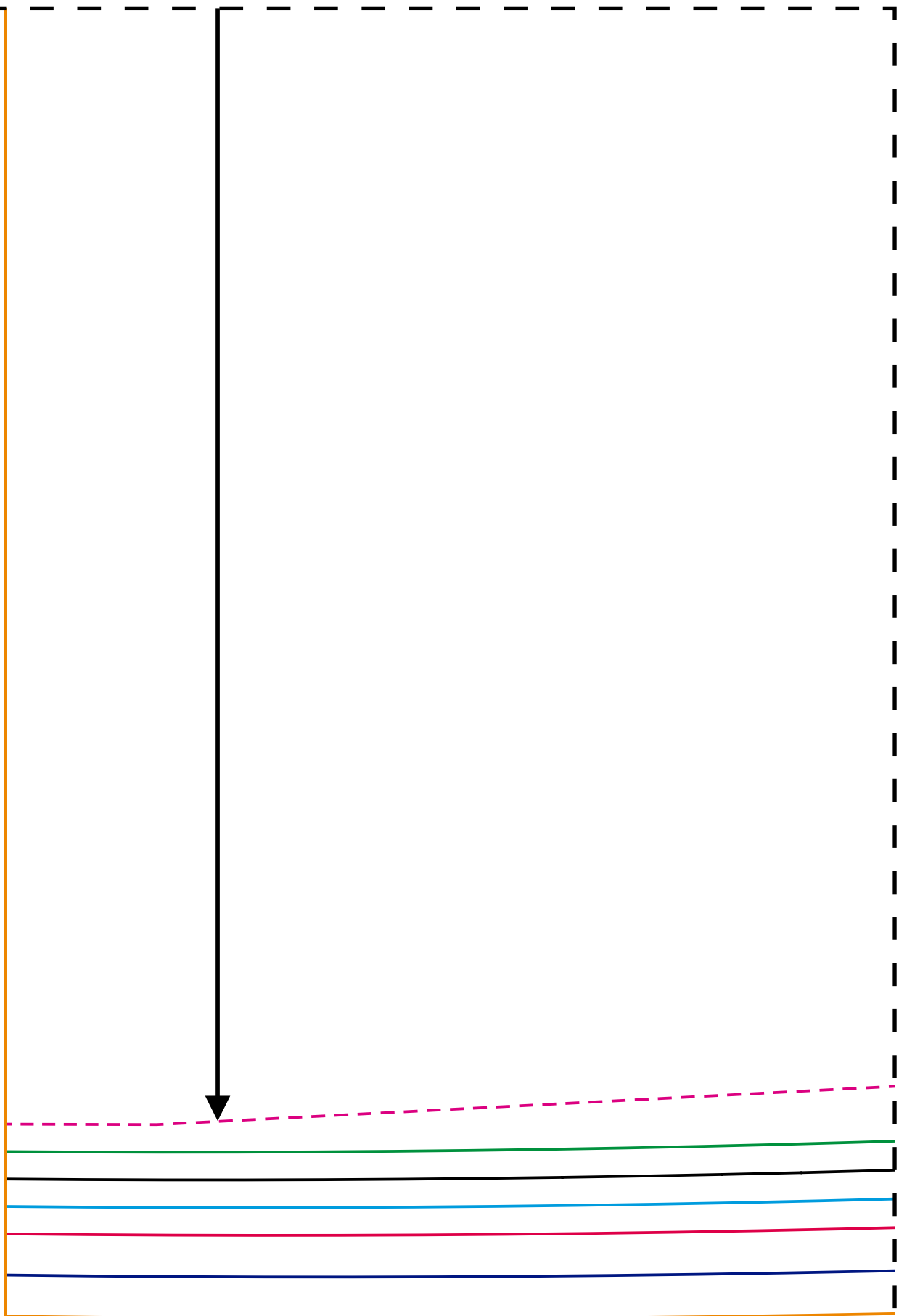




4a

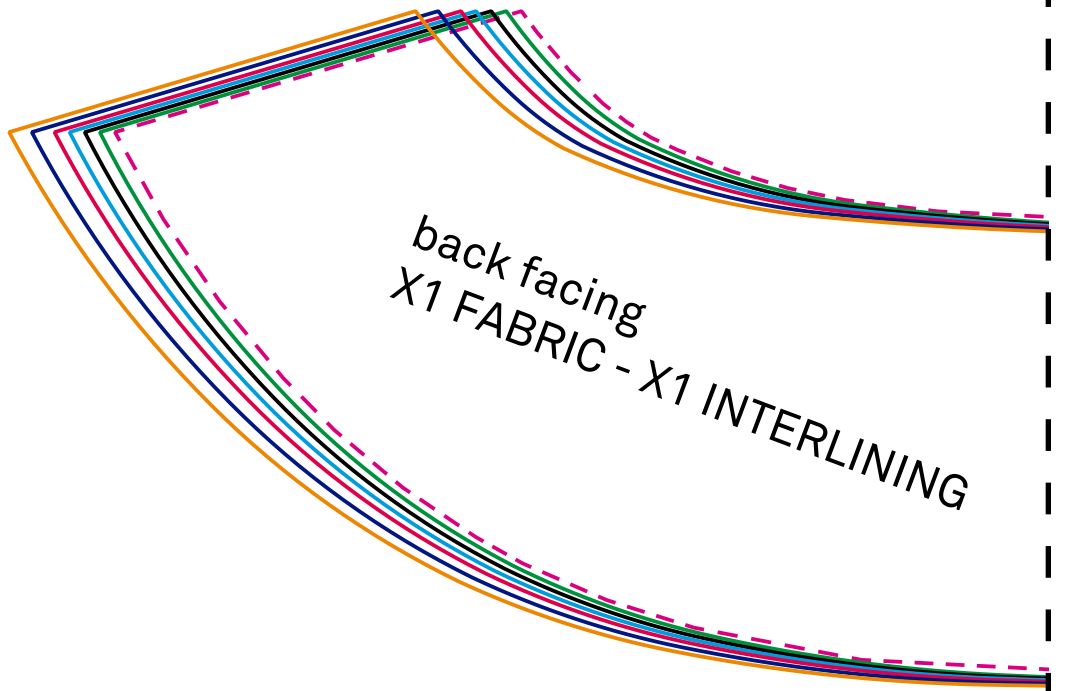


5a





5a

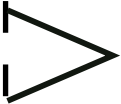
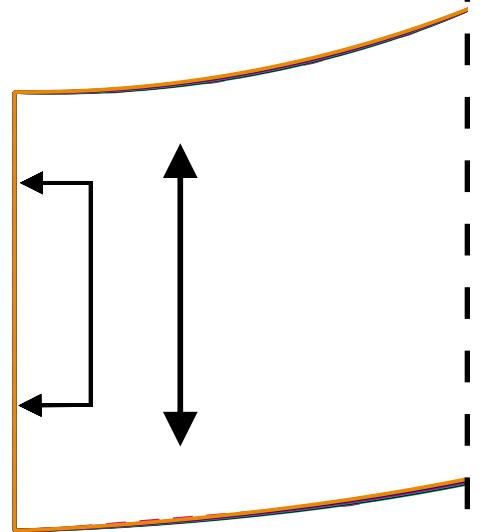
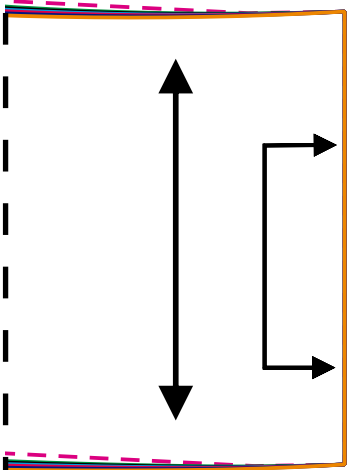


6a





5b



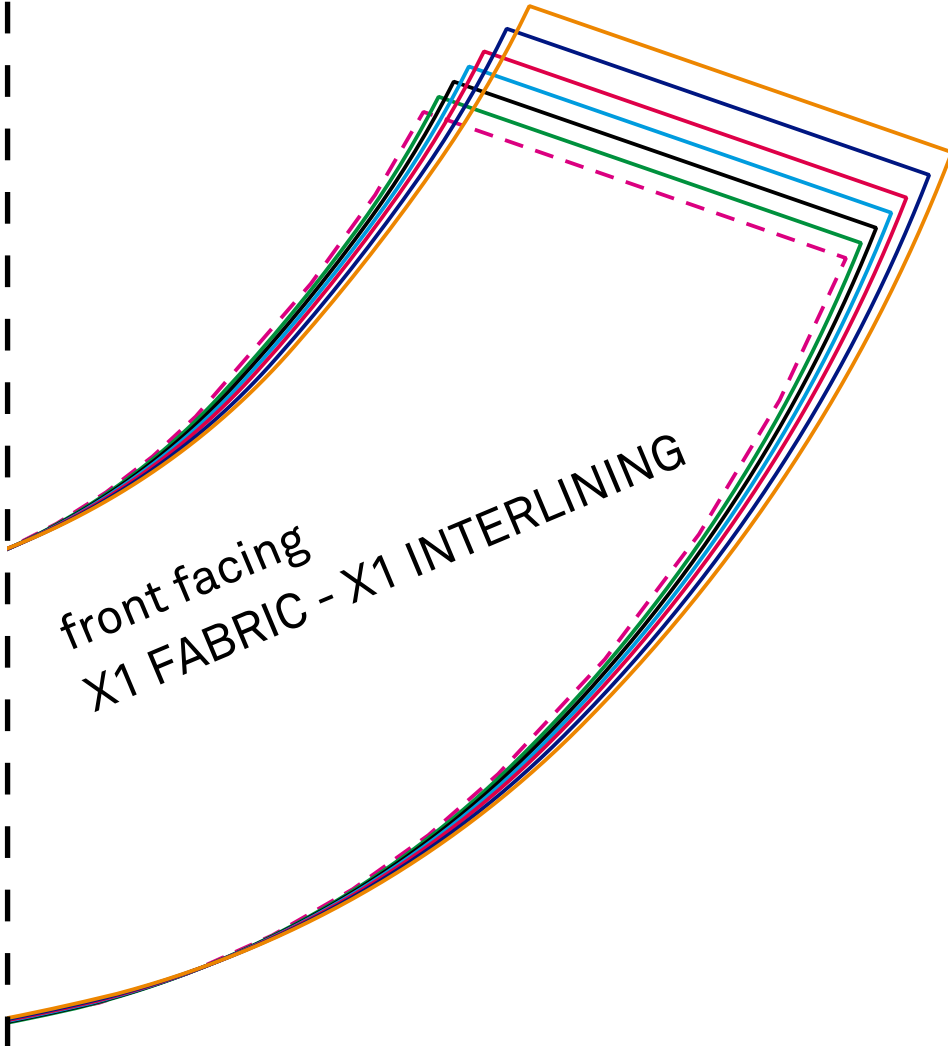
6a

6b

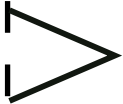




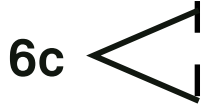
5c



front facing
X1 FABRIC - X1 INTERLINING



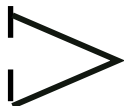
6b



6c

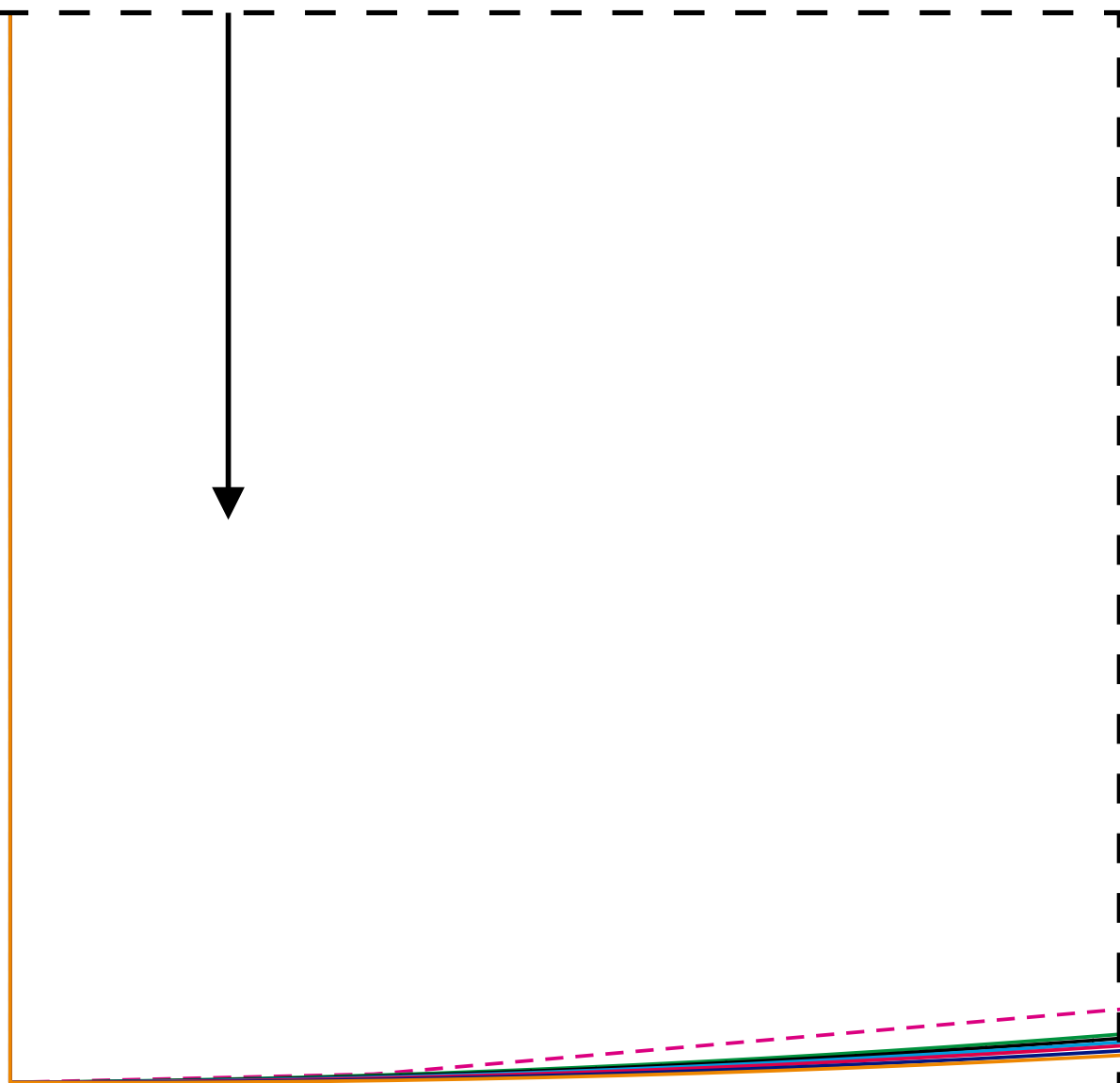


5d



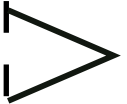
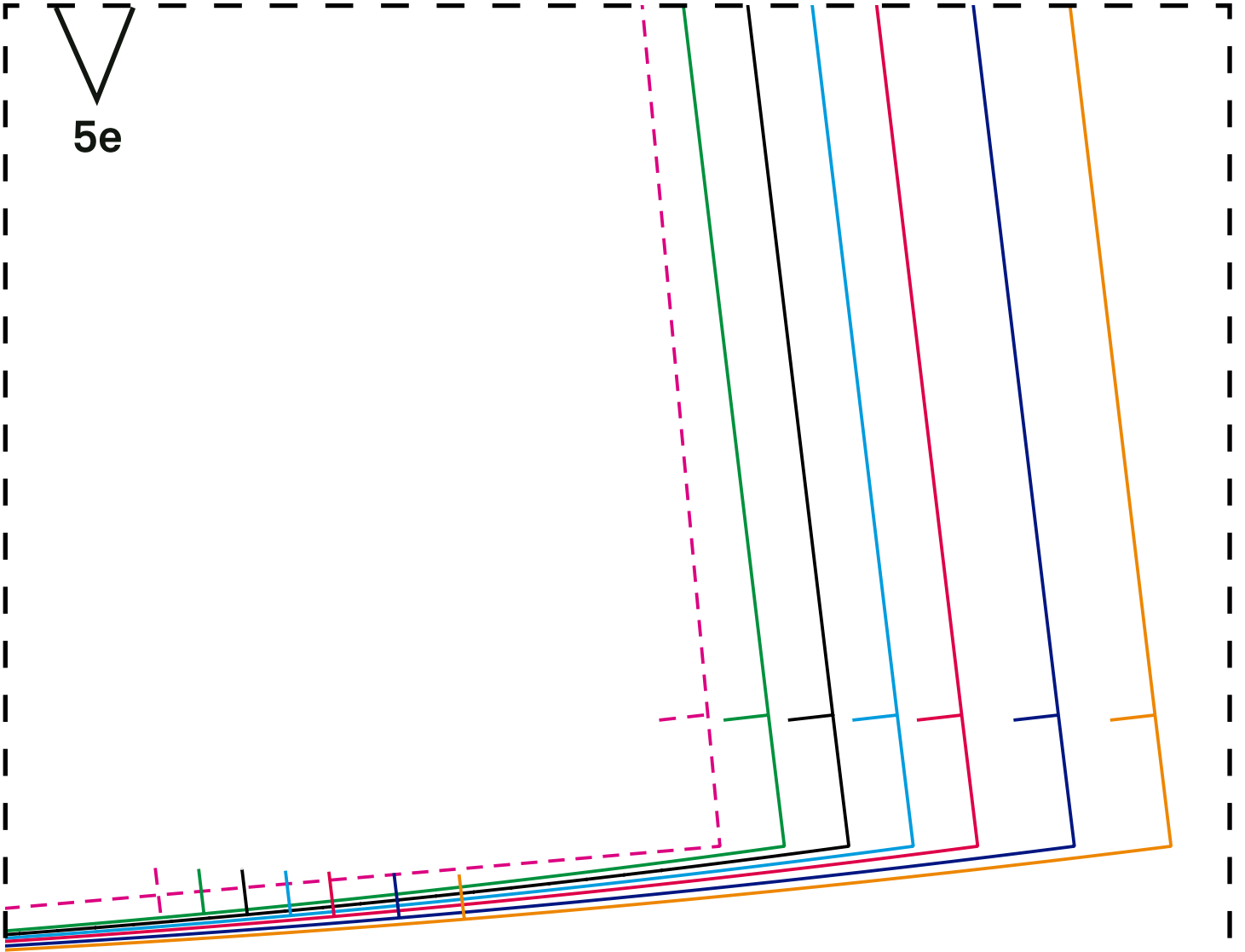
6c

6d





5e



6d

