



IKIGAI

SPRING / SUMMER 2025



#W4

Instructions et patron
(DIN-A4)

Pantalon japonais

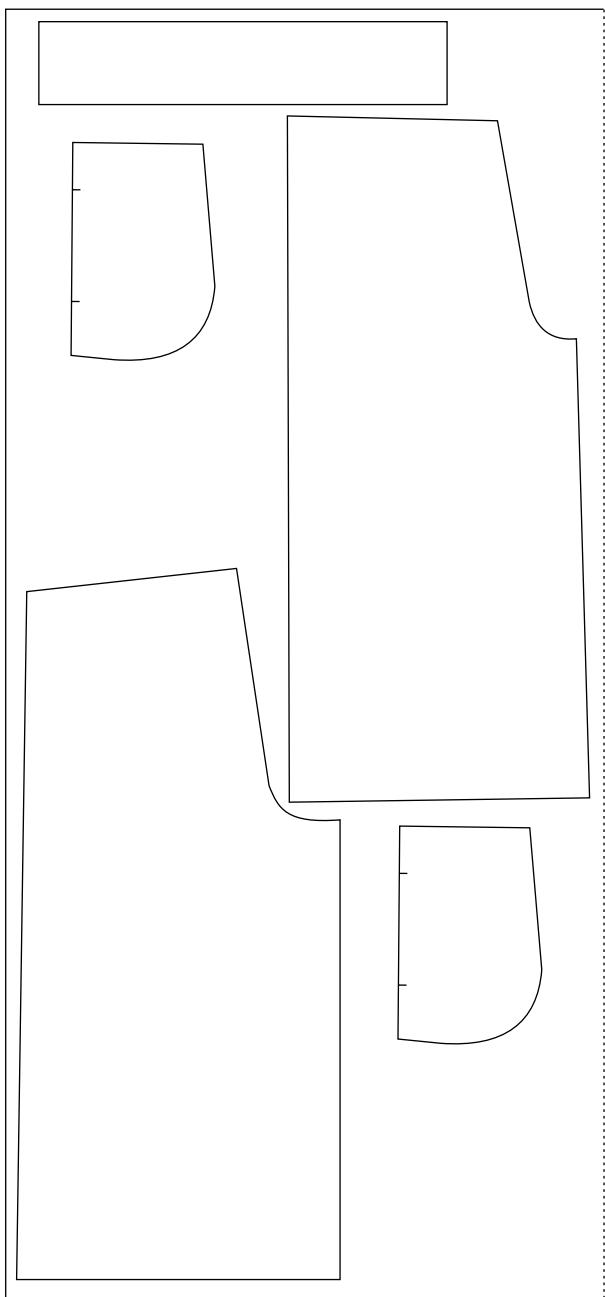


[Téléchargez ici](#)
[Patron en](#)
[taille réelle](#)



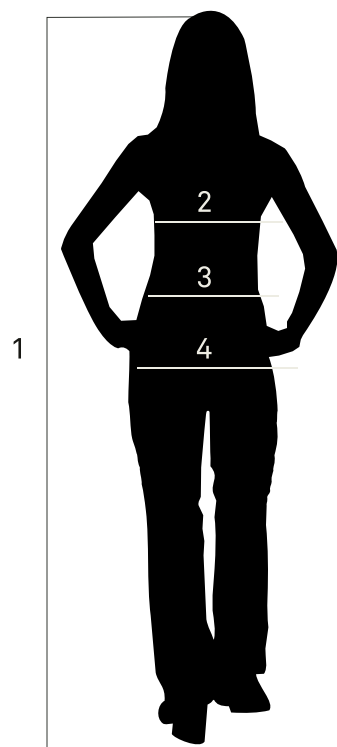
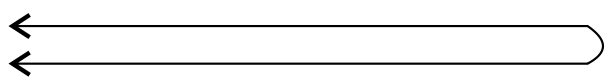
KATIA

Plan de coupe :



Fournitures :
 Environ 1 m d'élastique de 4 cm de large pour la ceinture

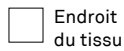
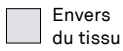
Métrage nécessaire :
 XXS, XS, S & M: 155 cm
 L, XL & XXL 175 cm
 Ecoviscose Katia Fabrics



Woman

	XXS	XS	S	M	L	XL	XXL
1. Height (cm)	168 ± 4 cm average height						
2. Bust (cm)	82	86	90	94	98	104	110
3. Waist (cm)	62	66	70	74	78	84	90
4. Hips (cm)	90	94	98	102	106	112	118

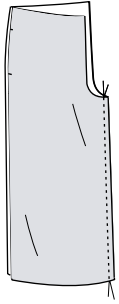
INSTRUCTIONS



Préparation:

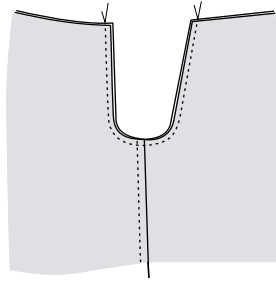
Avant de couper le tissu, il faut le traiter à la vapeur ou le laver. Ainsi, il rétrécit avant la coupe. Répartir le patron sur le tissu en respectant le plan de coupe. Couper en suivant exactement la ligne du patron qui inclut une marge de couture de 1 cm. Les ourlets sont également inclus. Ne pas oublier de cranter pour reporter les repères du patron sur le tissu.

1.



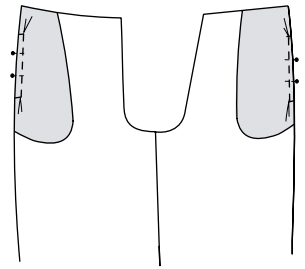
Placer le devant et le dos d'une jambe endroit contre endroit et coudre à la machine la partie rectiligne. Procéder de même sur l'autre jambe.

2.



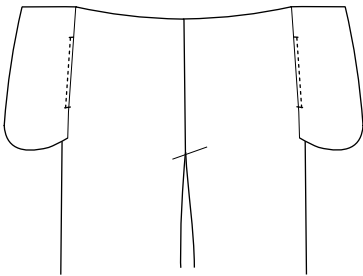
Assembler le devant et le dos du pantalon et coudre l'entrejambe, endroit contre endroit.

3.



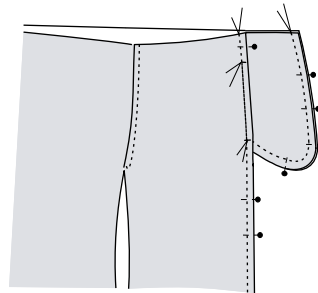
Placer les fonds de poche sur les devants et les dos, endroit contre endroit. Épingler et coudre l'ouverture à la machine entre les repères reportés du patron.

4.



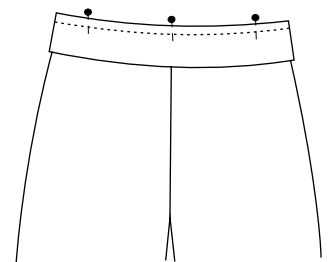
Retourner la poche sur l'endroit et piquer sur la couture précédente sur l'endroit pour renforcer cette couture.

5.



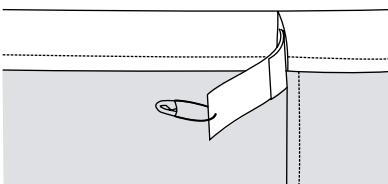
Épingler le fond des poches (devant et dos) et coudre à la machine tout le pourtour sur l'envers. Les poches sont formées. Coudre la couture latérale du pantalon, sauf l'ouverture de la poche.

6.



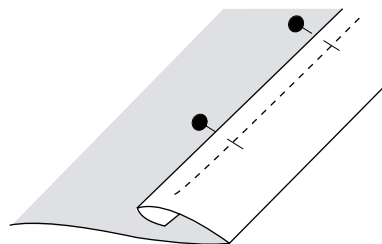
Coudre les côtés de la ceinture, endroit contre endroit et la plier en deux au fer à repasser. Laisser une extrémité de la ceinture non cousue pour passer l'élastique. Appliquer la ceinture sur le haut du pantalon, endroit contre endroit, faufiler, coudre et surpiquer.

7.



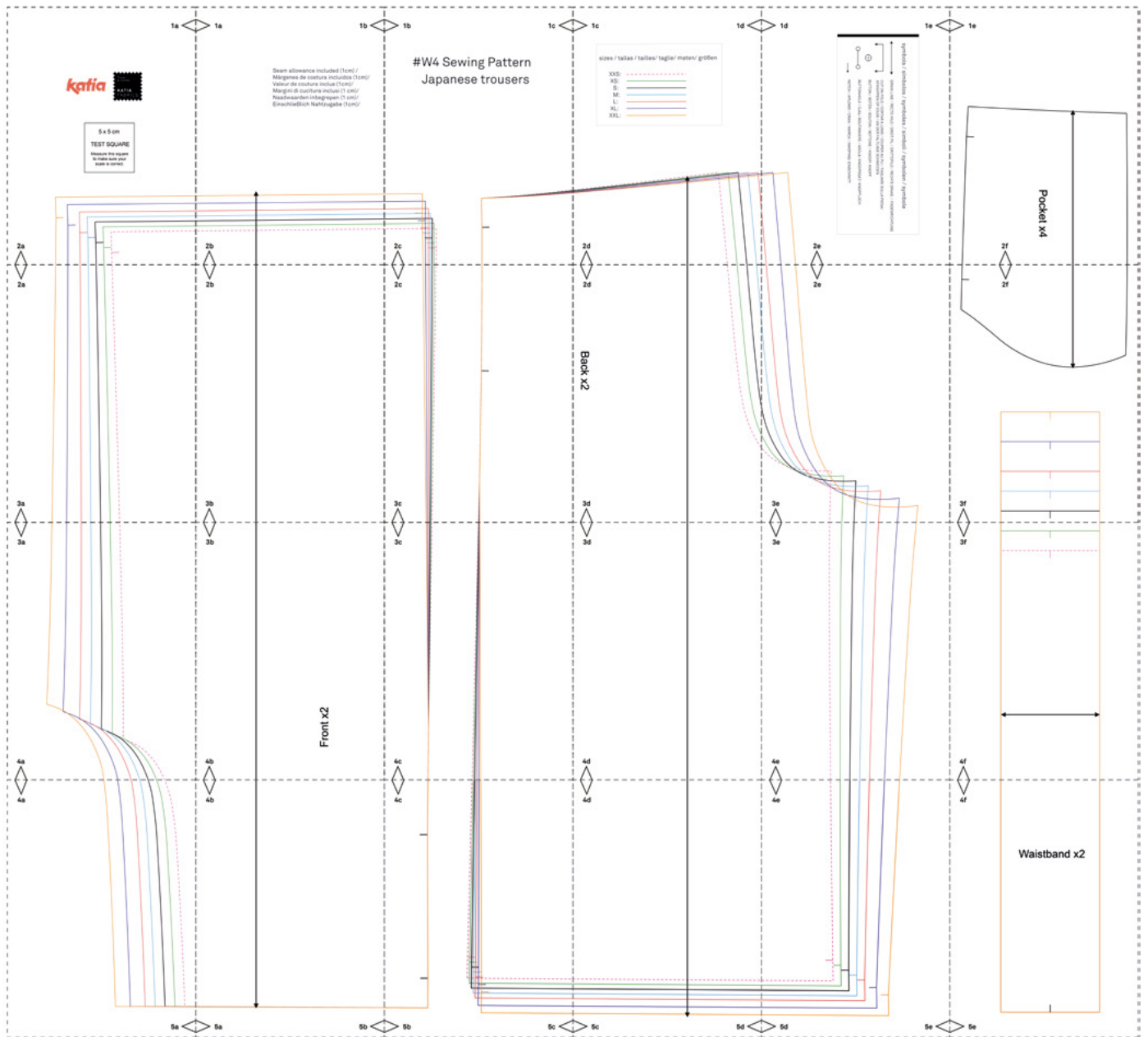
Passer l'élastique à l'aide d'une épingle de sécurité, l'ajuster à la bonne taille et coudre ensemble les deux extrémités de l'élastique. Fermer l'ouverture.

8.




Faire les ourlets du bas des jambes. Pour cela replier sur 1 cm au fer à repasser sur l'envers puis replier une deuxième fois, repasser, épingler et coudre.

Patron:





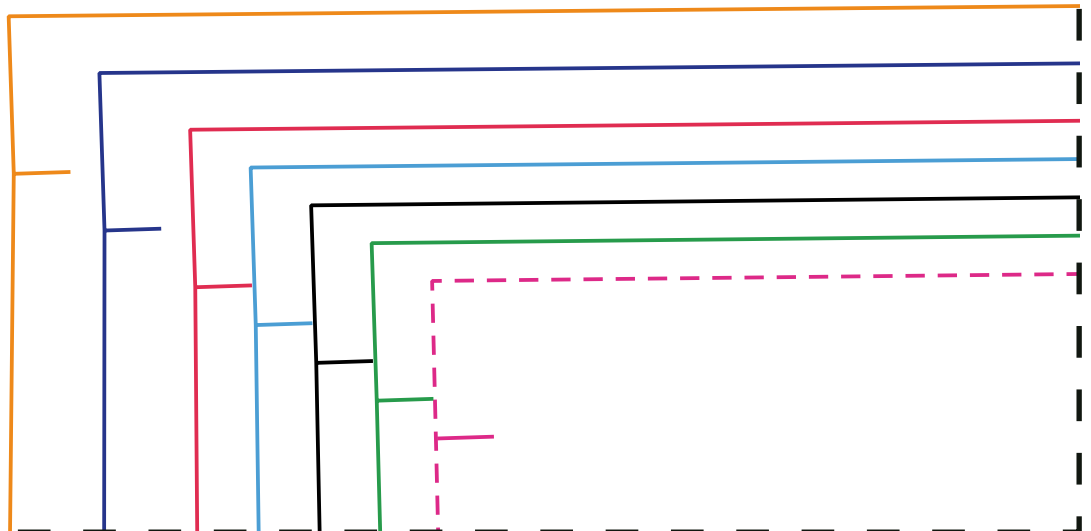
1a 

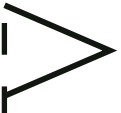
Katja



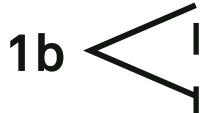
5 x 5 cm
TEST SQUARE
Measure this square
to make sure your
scale is correct.

2a 



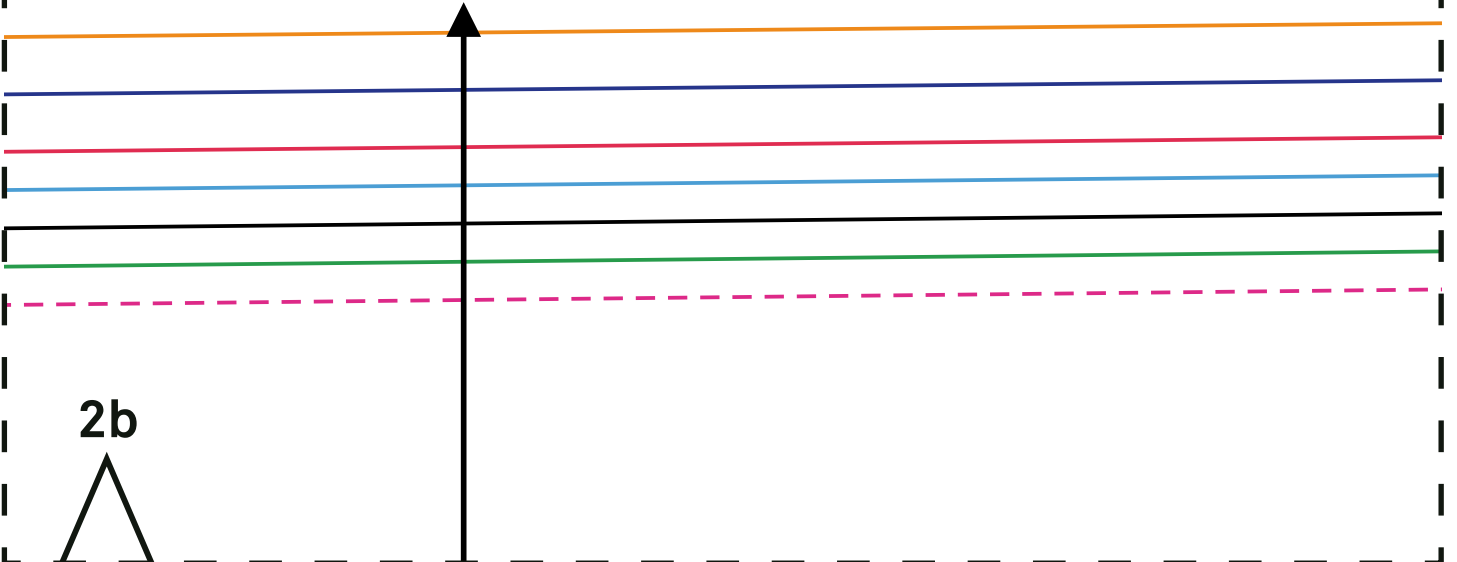


1a

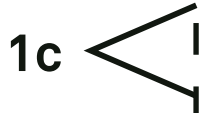
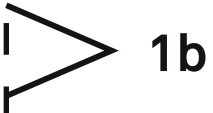


1b

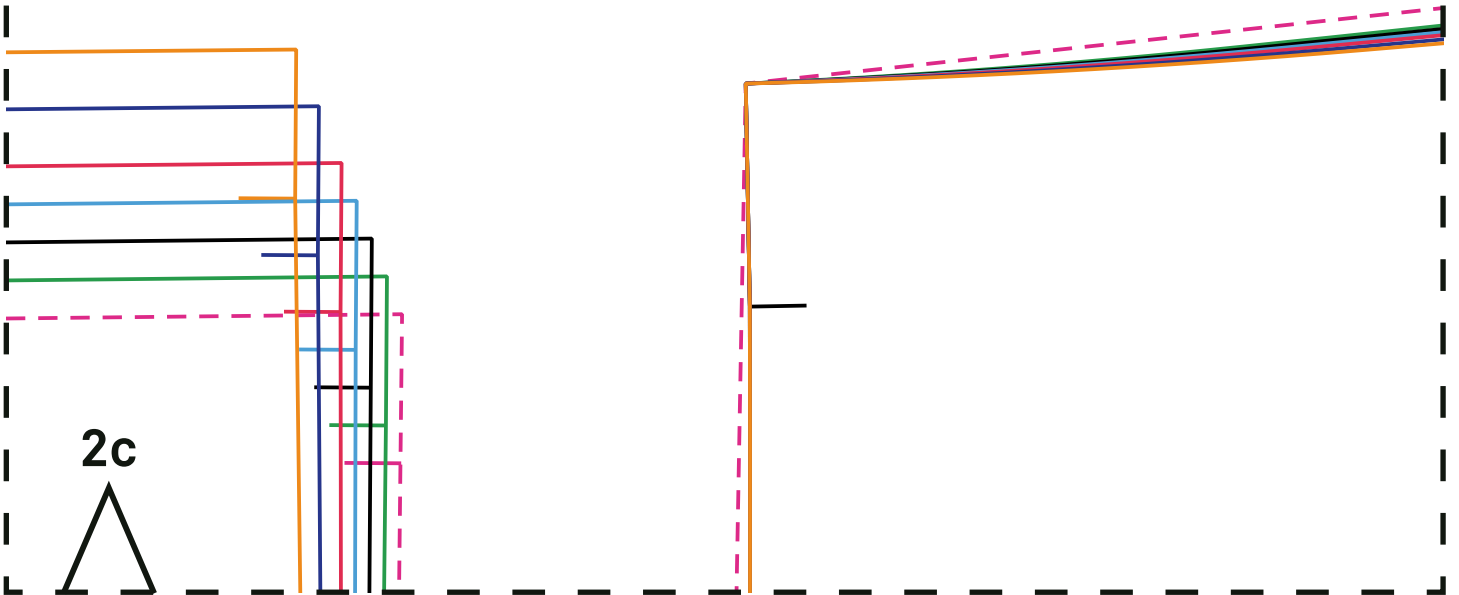
Seam allowance included (1cm) /
Márgenes de costura incluidos (1cm)/
Valeur de couture incluse (1cm)/
Margini di cucitura inclusi (1 cm)/
Naadwaarden inbegrepen (1 cm)/
Einschließlich Nahtzugabe (1cm)/



2b



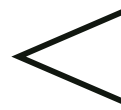
#W4 Sewing Pattern Japanese trousers












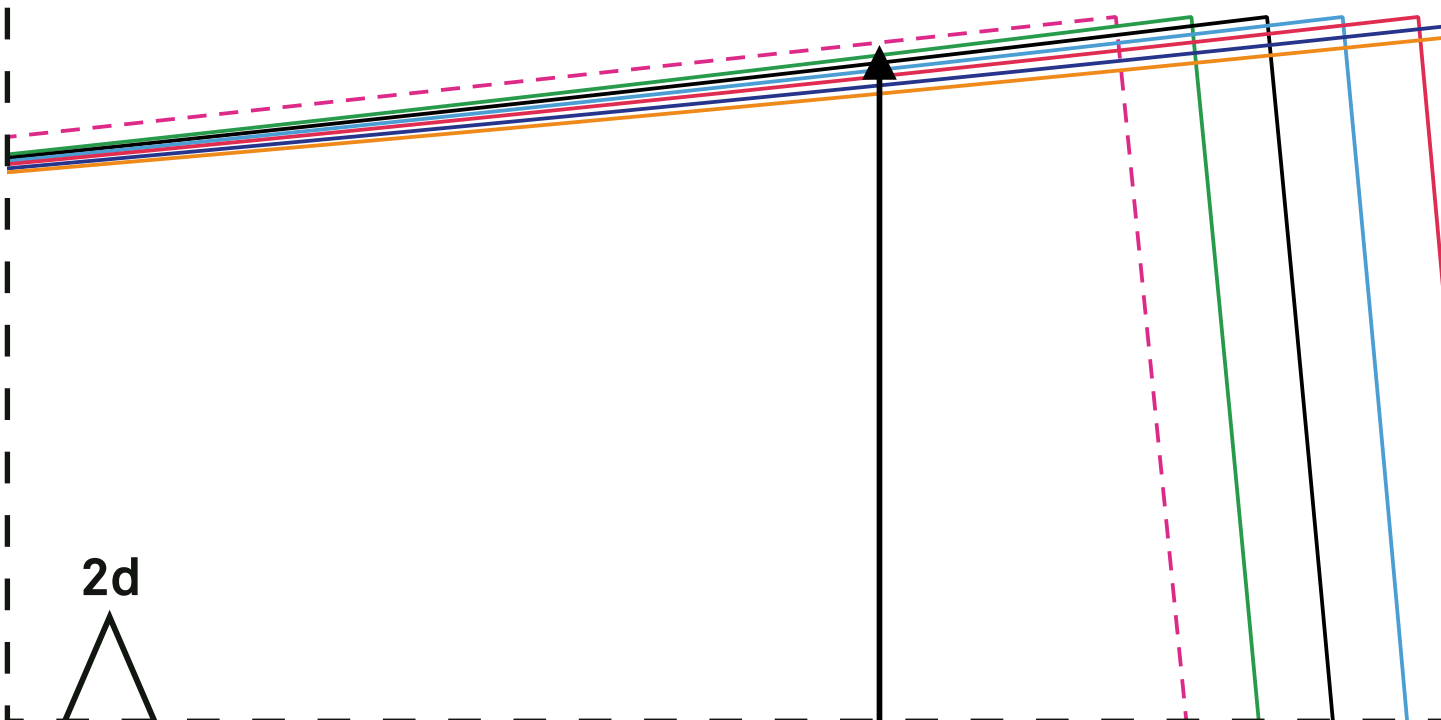
1c

1d



sizes / tallas / tailles/ taglie/ maten/ Größen

- XXS: 
- XS: 
- S: 
- M: 
- L: 
- XL: 
- XXL: 



2d



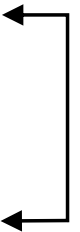
1e



symbols / símbolos / symboles / simboli / symbolen / symbole



GRAIN LINE / RECTO HILO / DROIT FIL / DRITTOFILO / RECHTE DRAAD / FADENRICHTUNG



CUT ON FOLD / CORTAR A LOMO / COUPER AU PLI / TAGLIARE SULLA PIEGA/
AFKNIPPEN OP VOUW / AN DER FALTLINIE SCHNEIDEN



BUTTON / BOTÓN / BOUTON / BOTTONE / KNOOP / KNOPF



BUTTONHOLE / OJAL / BOUTINNIERE / ASOLA / KNOOPSGAT / KNOPFLOCH

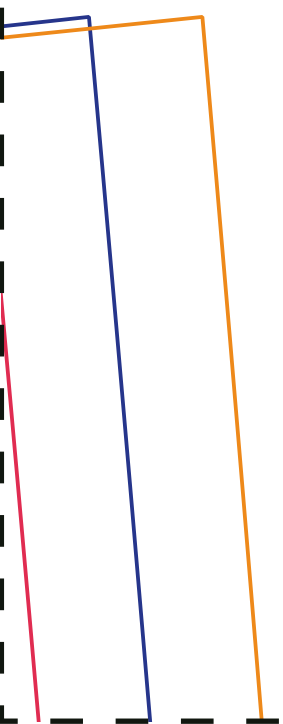
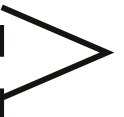


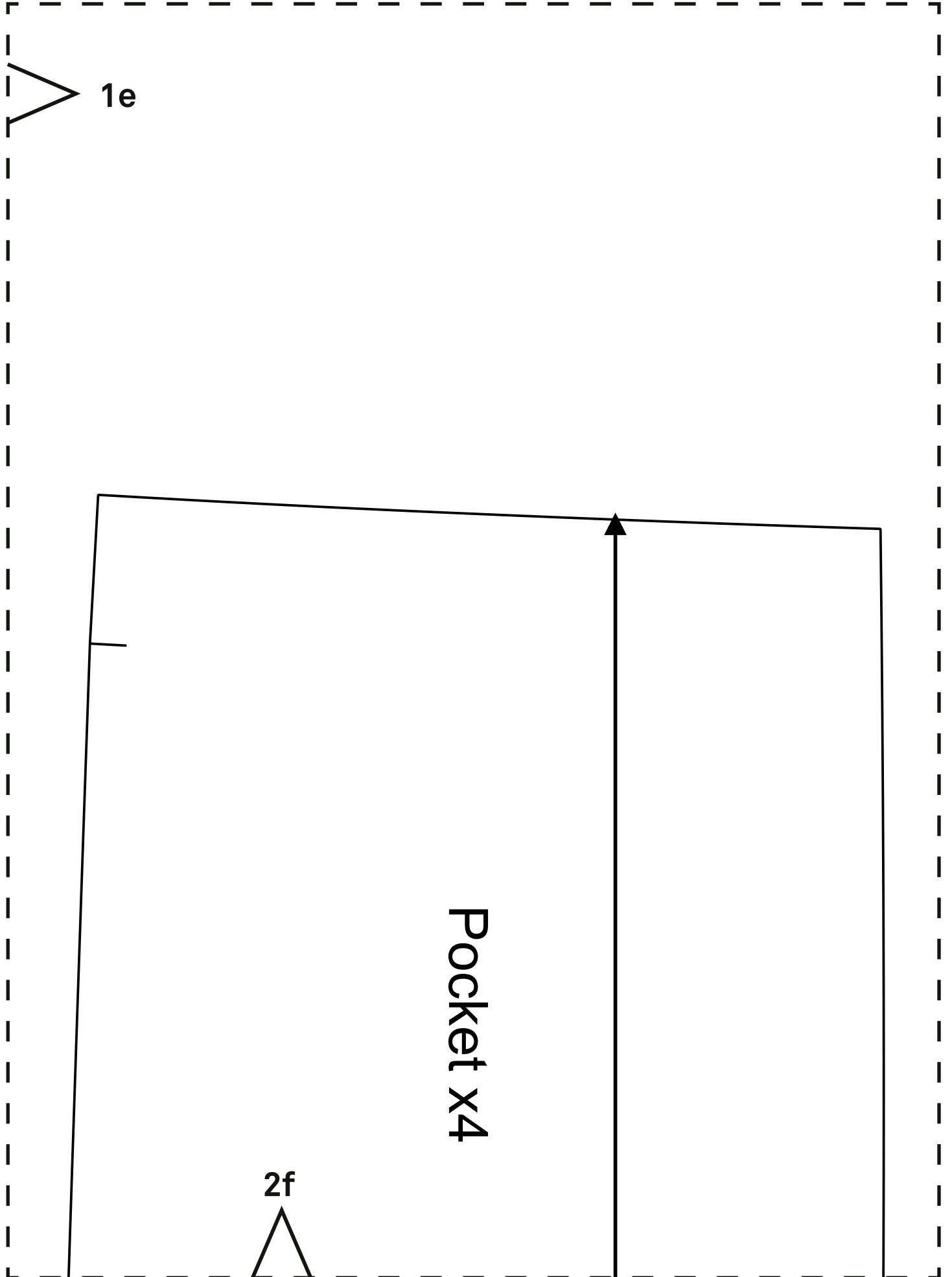
NOTCH / APLOMO / CRAN / MARCA / INKEPING / EINSCHNITT

2e



1d





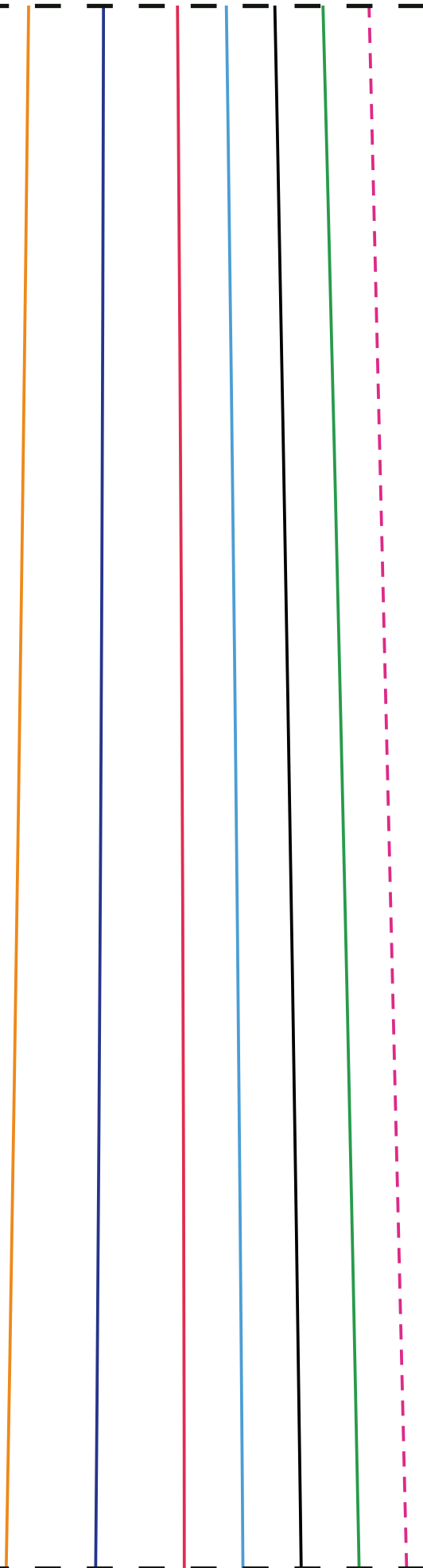
1e

Pocket x4

2f



2a



3a





$2b$



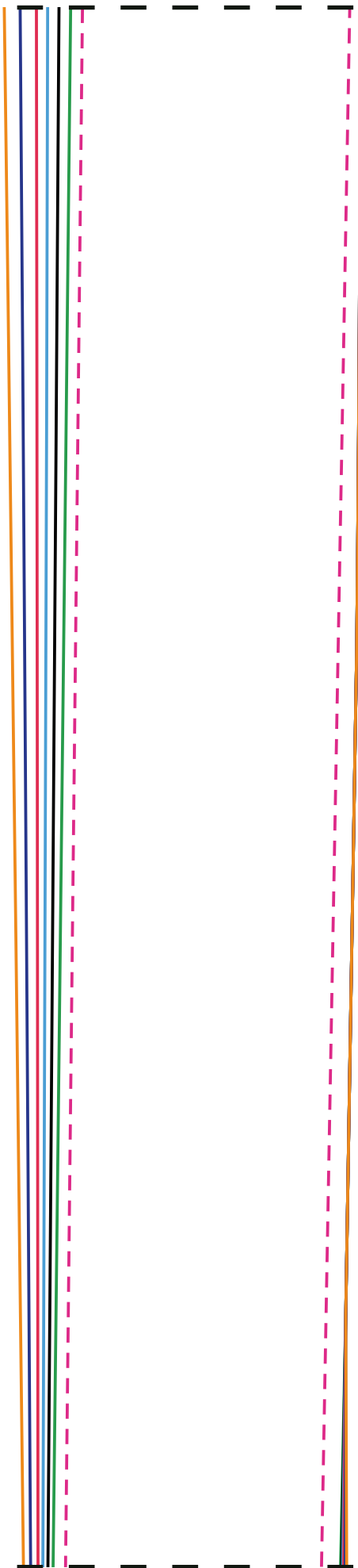
$3b$



2c



3c

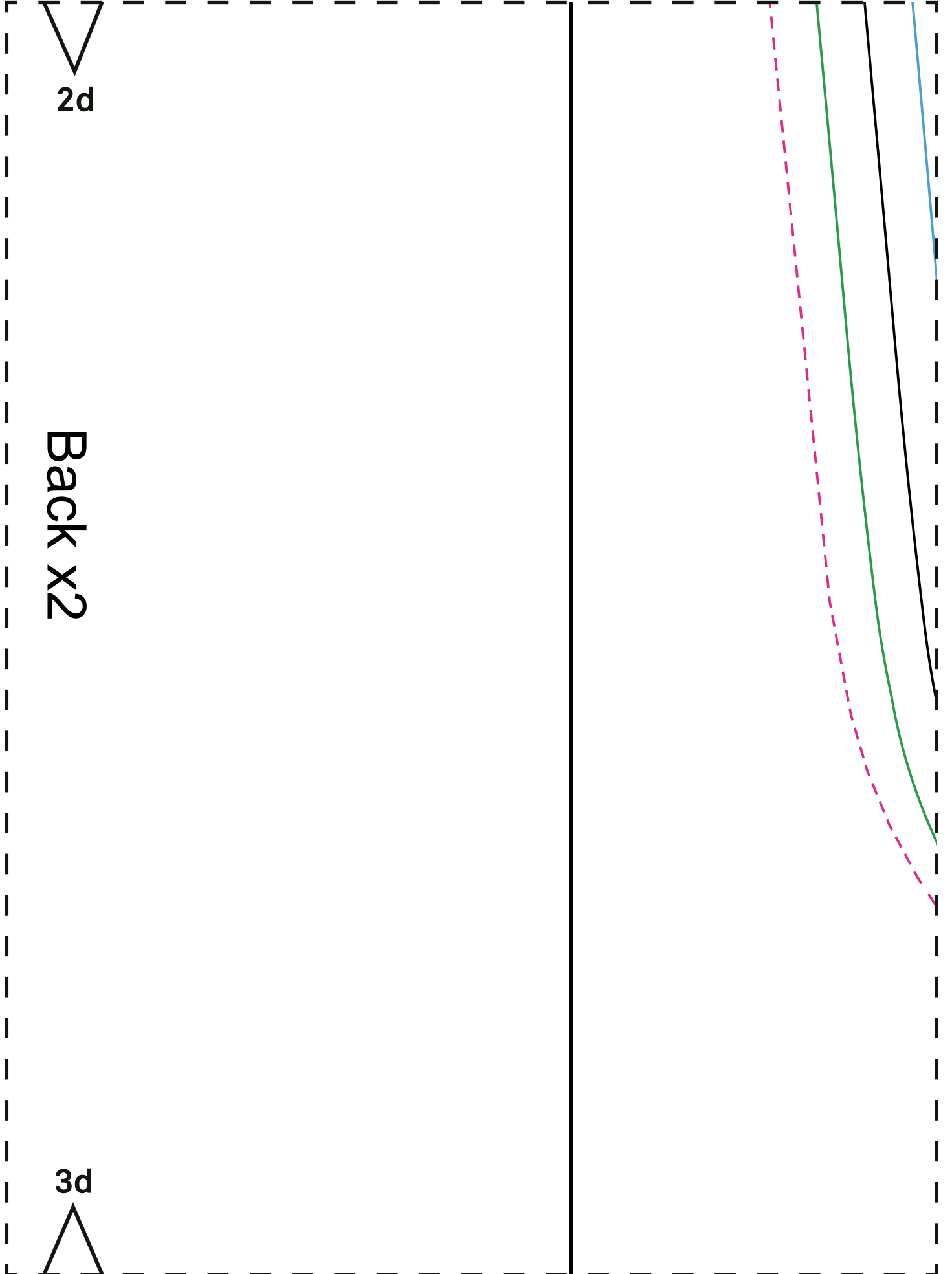




2d

Back x2

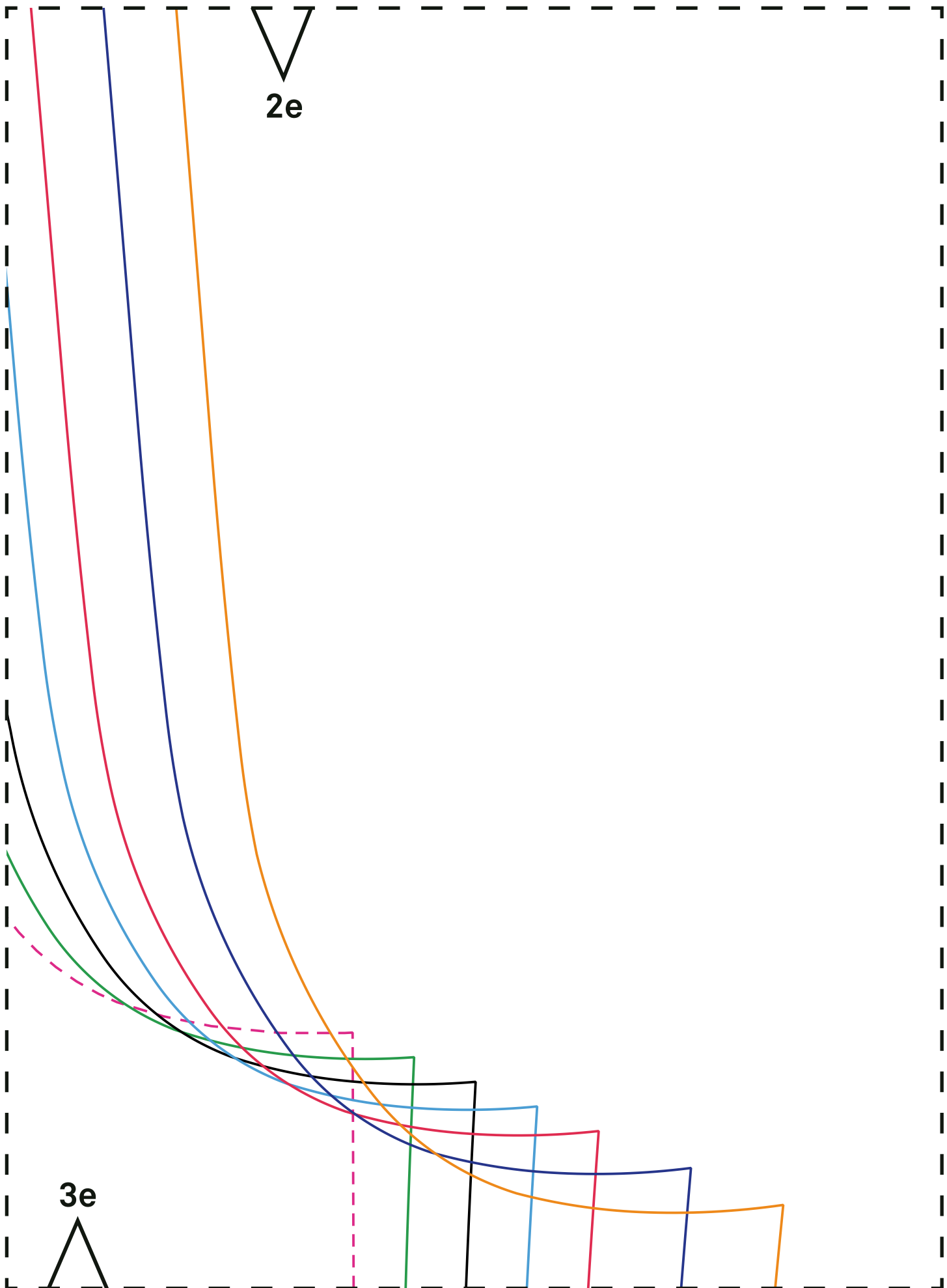
3d

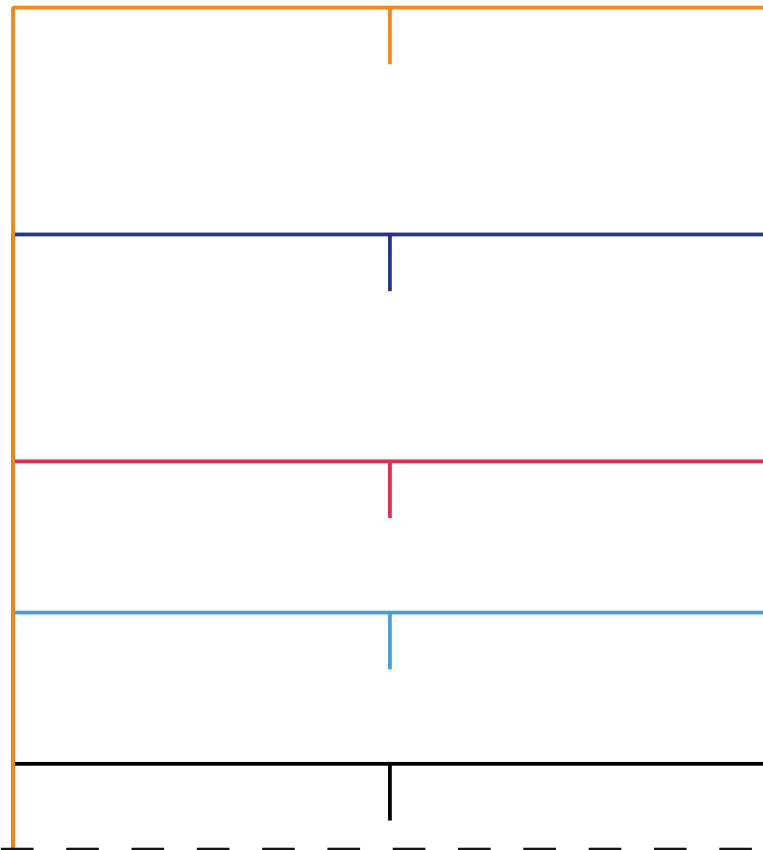
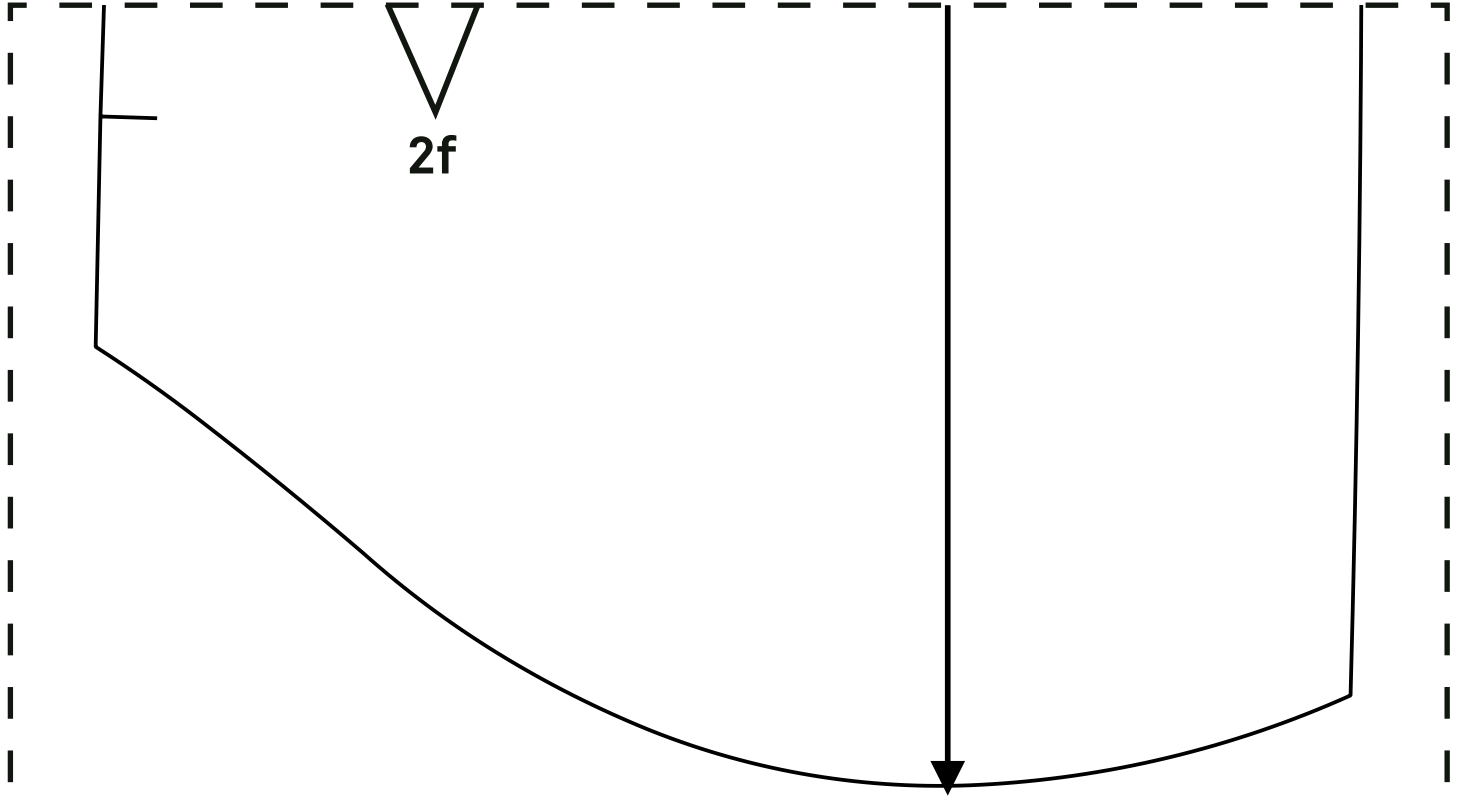




$2e$

$3e$





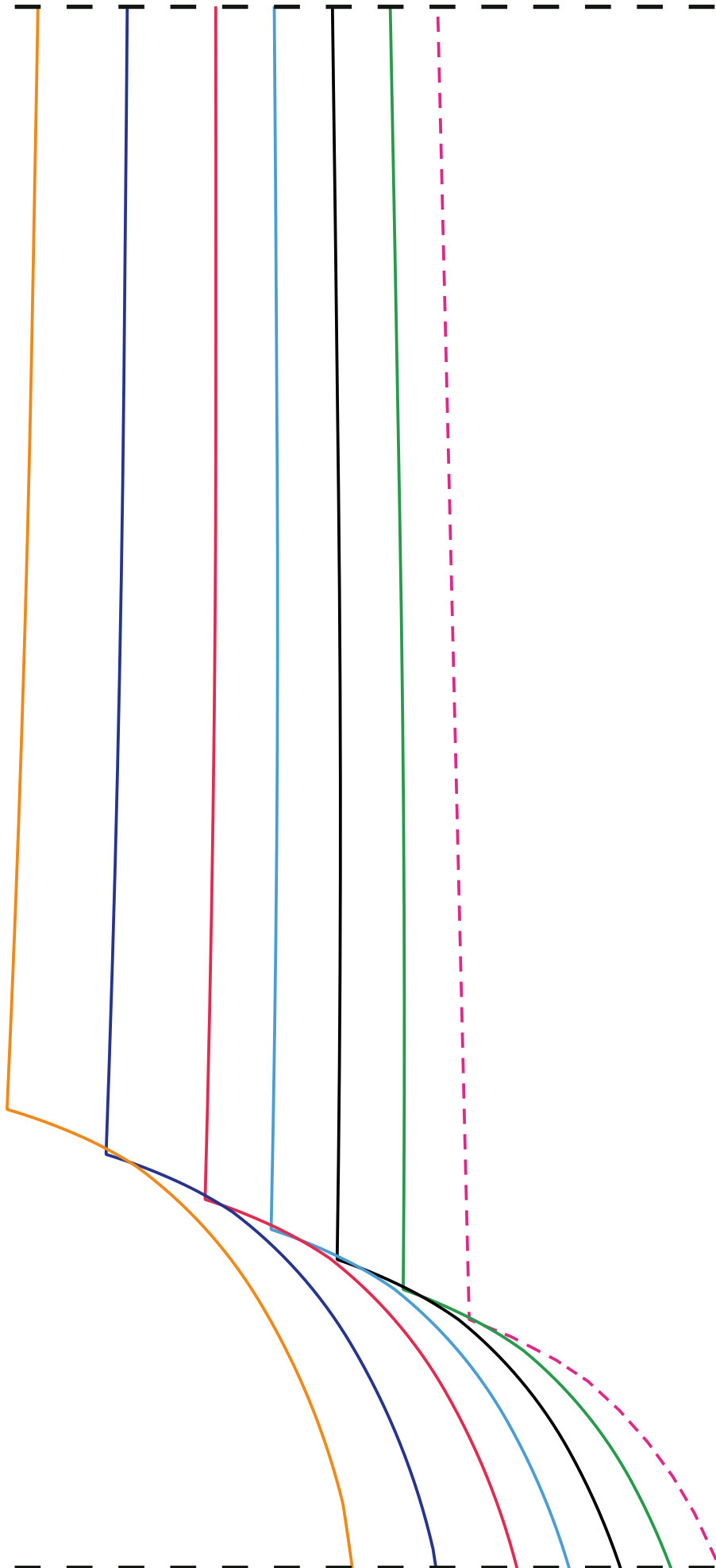
$3f$





3a

4a





3b

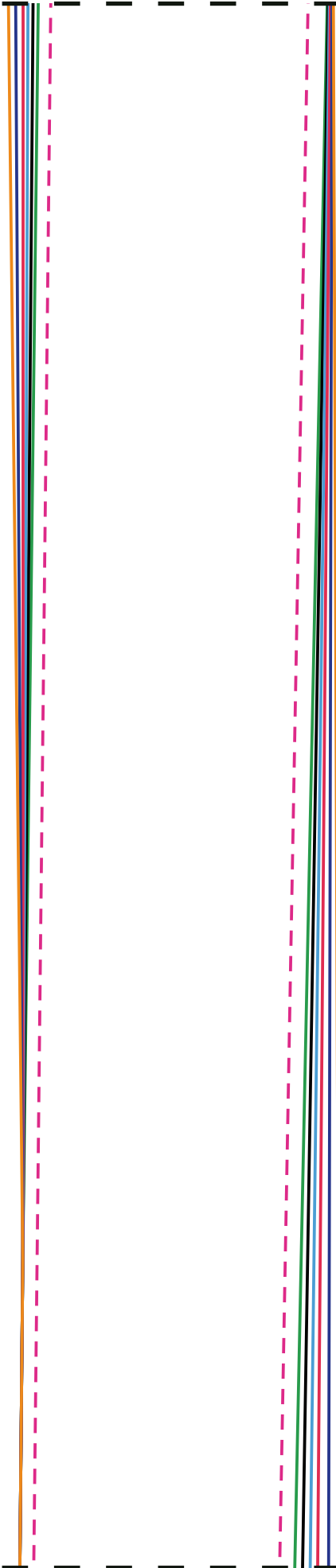


4b

Front x2



3c



4c



3d

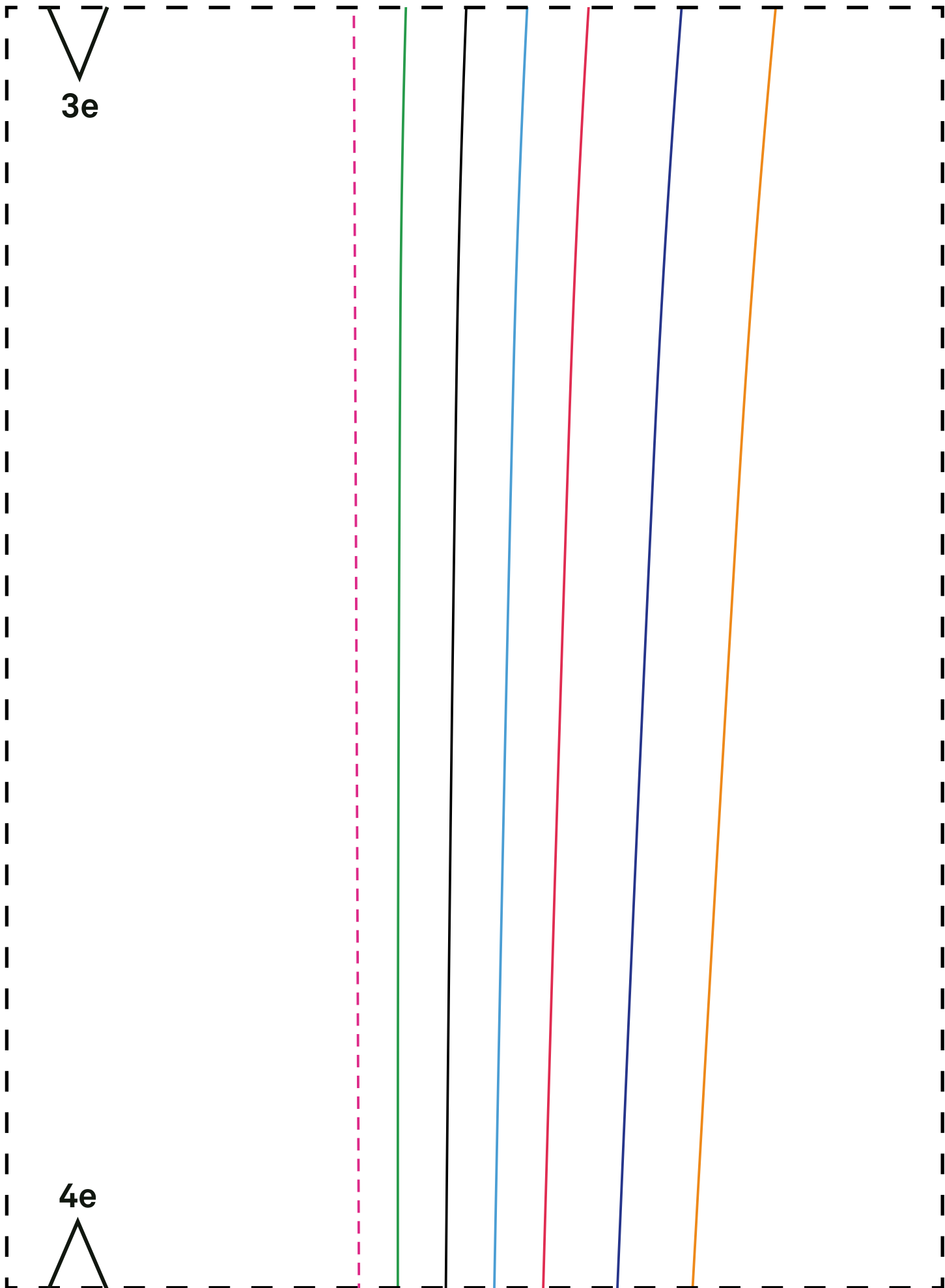


4d



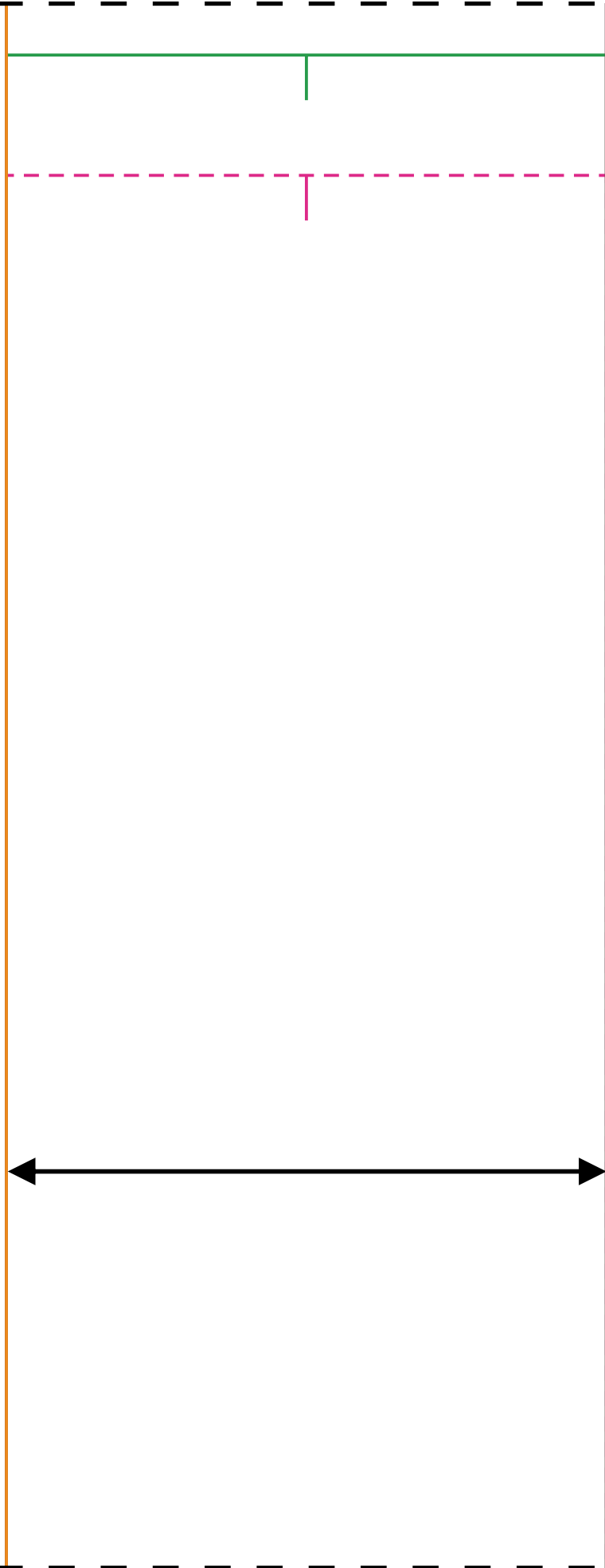
3e

4e





3f



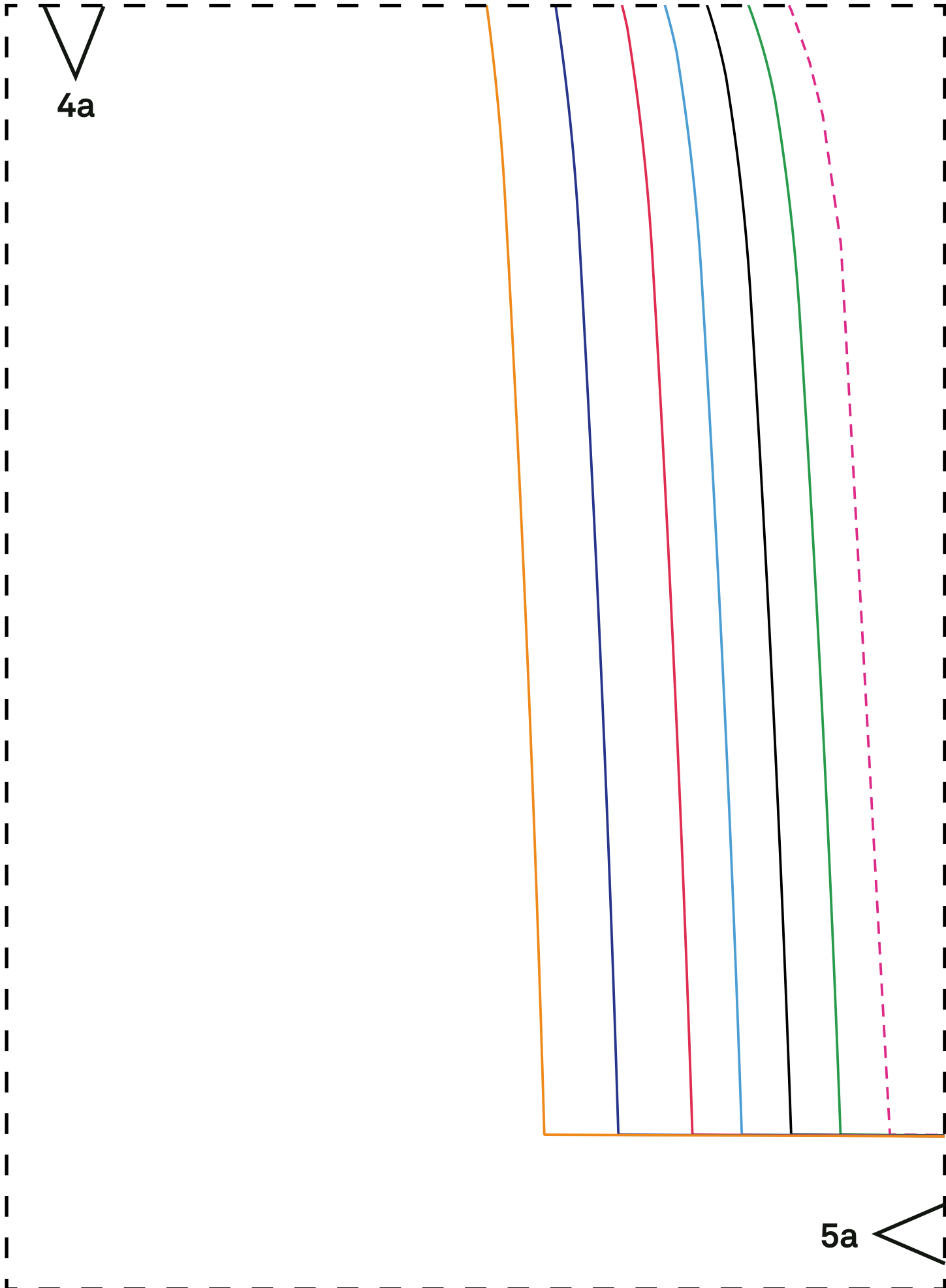
4f

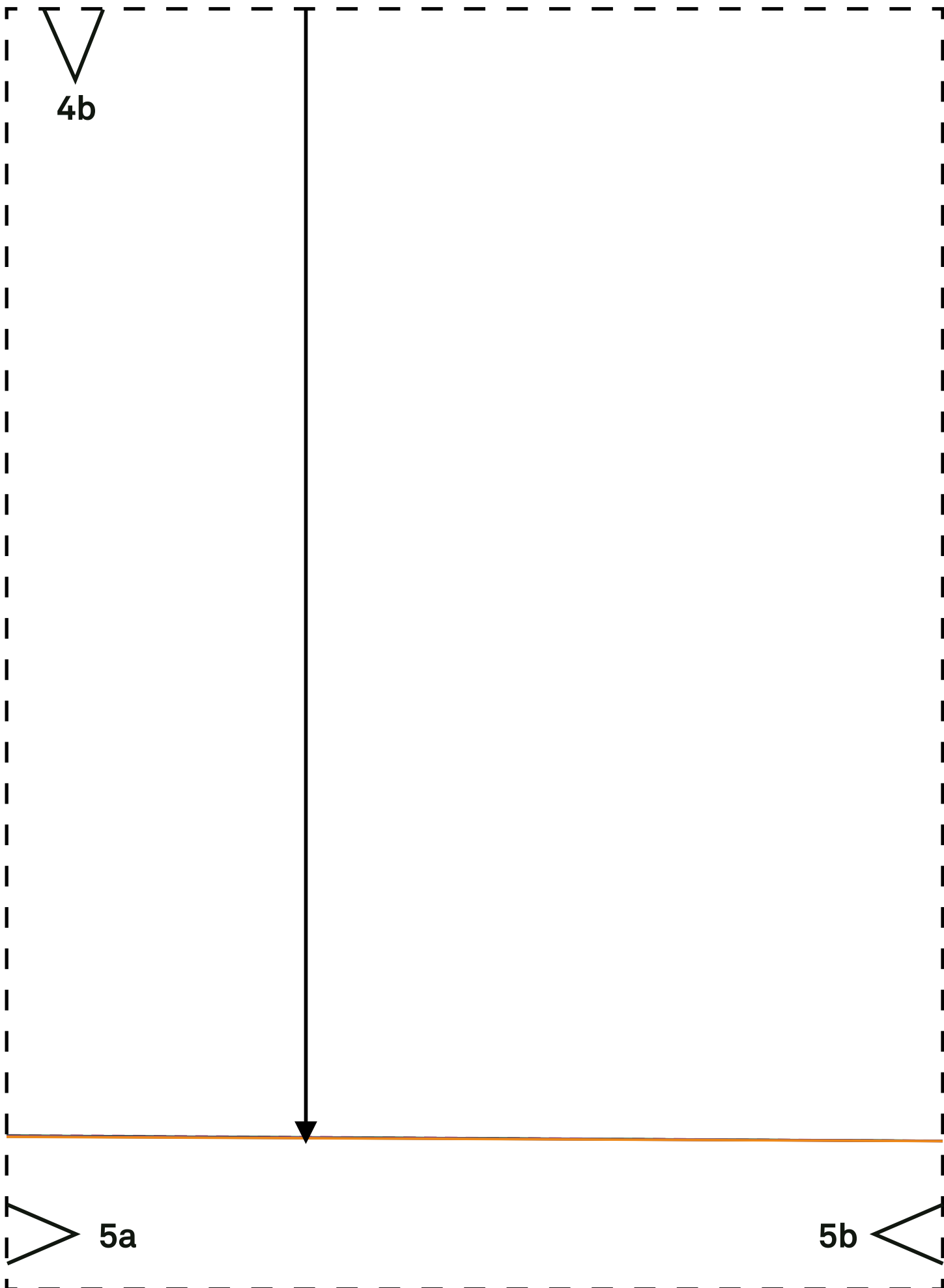




4a

5a





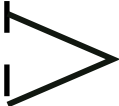
4b

5a

5b

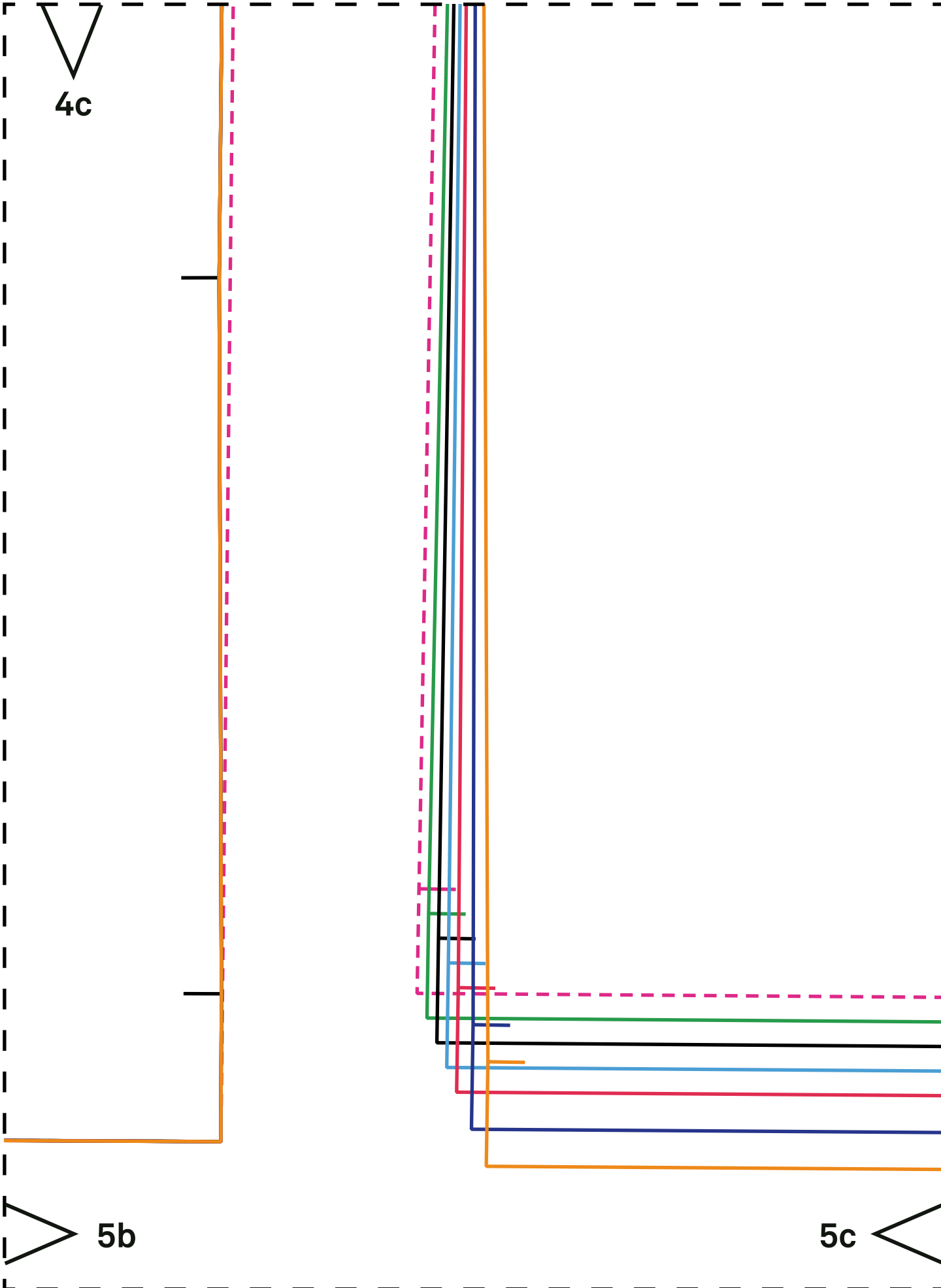


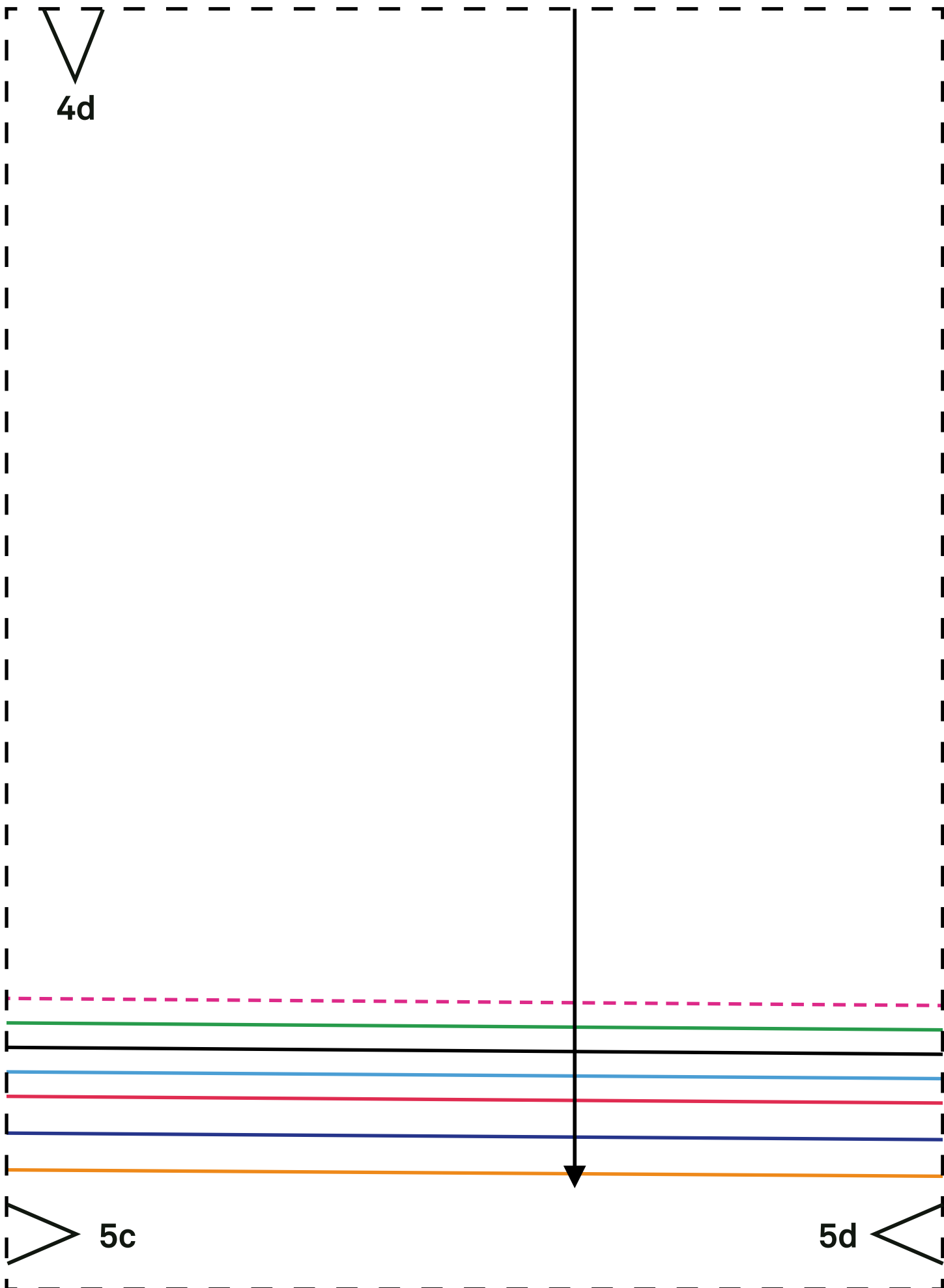
4c



5b

5c

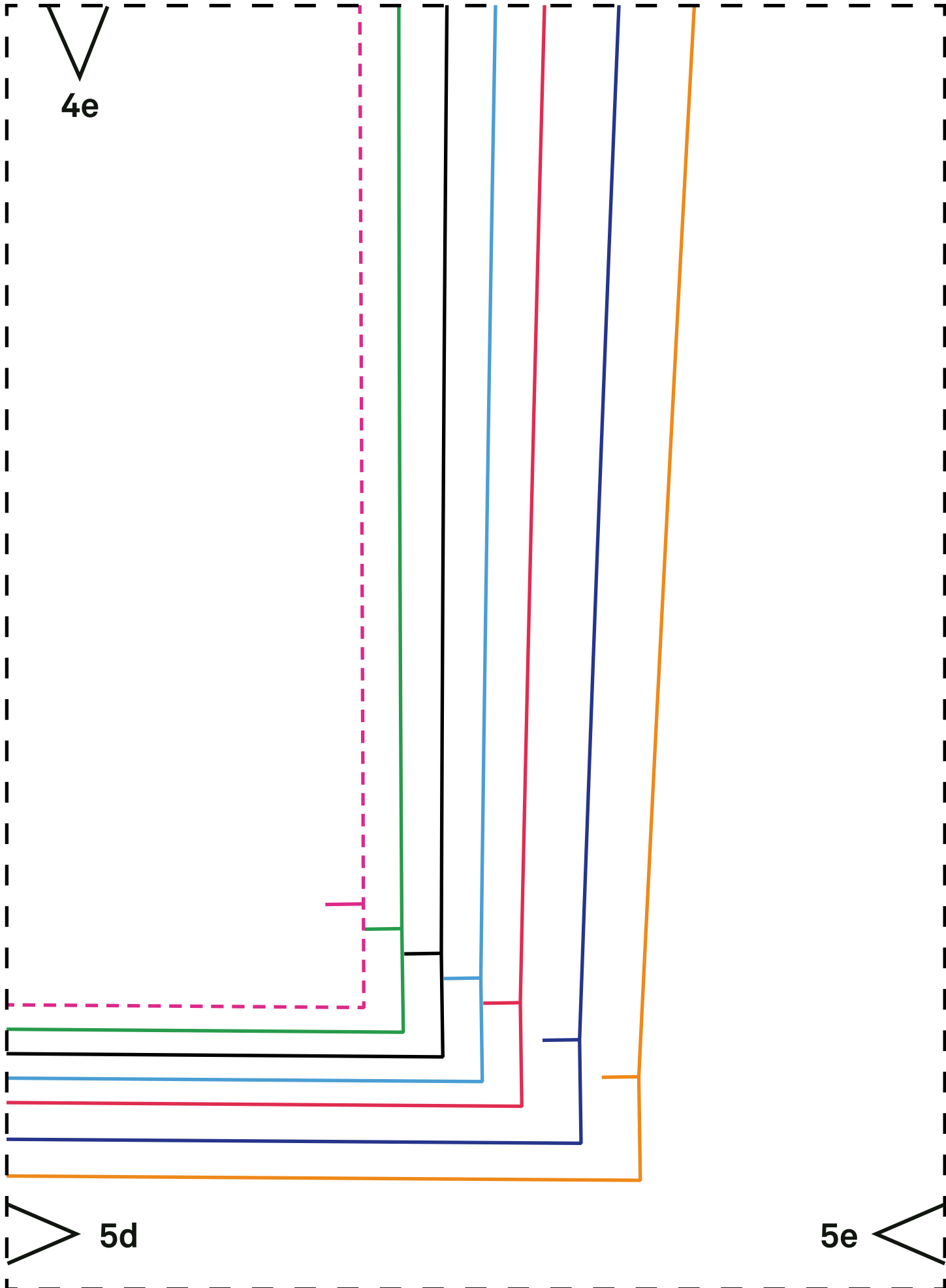




4d

5c

5d



4e

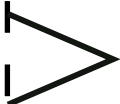
5d

5e



4f

Waistband x2



5e